

MarkMagic8 and JMagic8 Installation Instructions

**Version 8 Release 1
&
Version 8 Release 6**

Modification Level: 120515



MarkMagic

Support : 914-963-6600 Option 4 • Fax: 716-712-0666 •
help@cybra.com



We identify with success.

A.	INSTALLATION / UPGRADE ROADMAP	- 3 -
1.	INSTALLATION / UPGRADE ROADMAP	- 4 -
B.	INTRODUCTION TO MARKMAGIC 8.....	- 5 -
1.	INSTALLATION TERMS	- 5 -
2.	WHAT'S NEW IN MARKMAGIC 8	- 6 -
3.	WHAT'S NEW IN JMAGIC 8.....	- 7 -
4.	ENHANCEMENTS AND FIXES IN MOD LVL 120515	- 8 -
5.	WHAT WAS UPDATED IN MARKMAGIC 7	- 10 -
6.	WHAT WAS UPDATED IN JMAGIC 7	- 11 -
7.	MARKMAGIC ADD-ON OPTIONS	- 12 -
8.	VERSION HISTORY	- 14 -
9.	LICENSE INFORMATION.....	- 14 -
10.	MIRRORING INFORMATION OVERVIEW	- 15 -
C.	CD INSTRUCTIONS - NEW INSTALLATION	- 17 -
1.	INSTALLATION	- 17 -
2.	TROUBLESHOOTING.....	- 19 -
D.	DOWNLOAD INSTRUCTIONS - NEW INSTALLATION.....	- 21 -
1.	BEFORE YOU BEGIN	- 21 -
2.	INSTALLATION	- 24 -
3.	TROUBLESHOOTING.....	- 26 -
E.	CD INSTRUCTIONS - UPGRADE.....	- 27 -
1.	BEFORE YOU BEGIN	- 27 -
2.	INSTALLATION	- 28 -
3.	TROUBLESHOOTING.....	- 31 -
F.	DOWNLOAD INSTRUCTIONS - UPGRADE.....	- 33 -
1.	BEFORE YOU BEGIN	- 33 -
2.	INSTALLATION	- 38 -
3.	TROUBLESHOOTING.....	- 42 -
G.	JMAGIC INSTALLATION.....	- 43 -
1.	BEFORE YOU BEGIN	- 43 -
2.	INSTALLATION	- 43 -
I.	5250 WEB HELP INSTALLATION	- 44 -

**IMPORTANT INFORMATION FOR 4.1, 5.1 AND OLDER 6.1 USERS
(PLEASE READ BEFORE UPGRADING TO MARKMAGIC 8)**

Users upgrading from version 4.1 or 5.1 **must** upgrade to version 6.1 or 6.5 Mod Level 081219 before upgrading to Version 8. MarkMagic 8 does not co-exist with version 4.1 or version 5.1. Please see MarkMagic 6 install guide for details.

Users upgrading from version 6.1/6.5 mod level 080620 or earlier, to version 8 **must** upgrade to version 6.1/6.5 mod level 081219 first. Users upgrading from version 6.0 to version 8 **must** upgrade to version 6.1 mod level 081219 first.

Note: The MarkMagic 8 upgrade procedure will automatically cancel if the user attempts to upgrade from 4.1, 5.1 or 6.0. Please see MarkMagic 6 install guide for more details.

A. INSTALLATION / UPGRADE ROADMAP

To find your System i OS version enter the following command: **DSPPTF**
 To determine your current MarkMagic version and mod level (if MarkMagic is currently installed), start MarkMagic (STRMRKMAG), press F9 for a command line, and type the following command: **SETMMPRM**

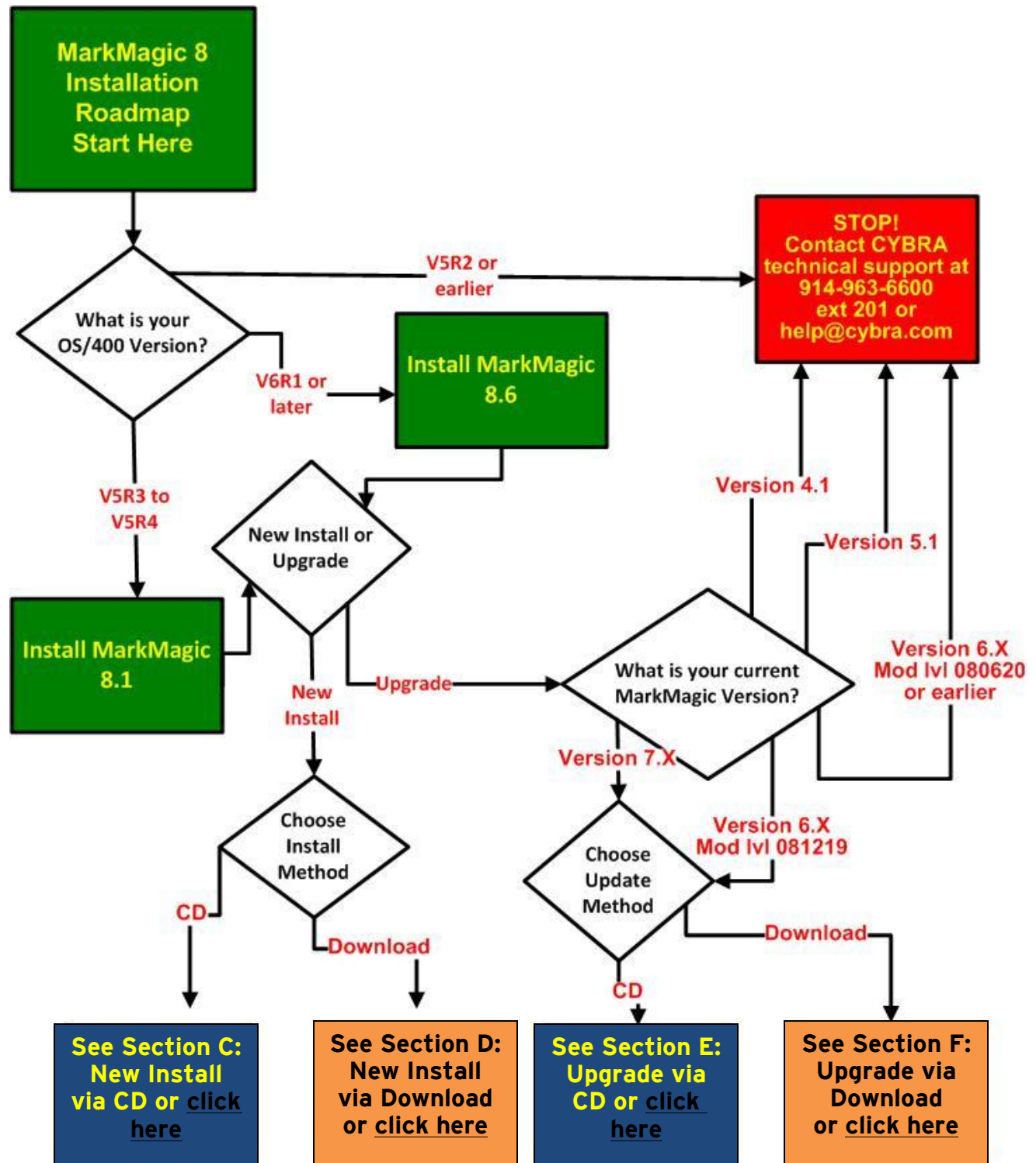
IBM's operating systems "V6R1M0" and above require MarkMagic to be split into two versions compiled to different OS versions. MarkMagic 8.1 and MarkMagic 8.6 contain identical fixes and updates.

1. MarkMagic 8.6 mod level 120515 is compatible with IBM's System i OS V6R1M0 and above. If you are running an older MarkMagic version and plan to upgrade to OS V6R1M0 or above, an upgrade to MarkMagic 8.6 is required. MarkMagic 8.6 will not run on an OS release prior to V6R1M0.
2. MarkMagic 8.1 mod level 120515 is compatible with System i OS releases V5R3M0 and V5R4M0. MarkMagic version 8.1 is not compatible with System i OS release V6R1M0 and above.
3. Both MarkMagic versions (8.1 and 8.6) are shipped on the MarkMagic Product CD. The install/upgrade program detects your OS version and automatically installs the compatible MarkMagic version. If you are downloading MarkMagic from the web, be sure to download the correct version for your OS version and mod level.
4. JMagic version 8 mod level 120515 is compatible with both MarkMagic 8.1 mod level 120515 and MarkMagic 8.6 mod level 120515.

NOTE: If multiple versions of MarkMagic are installed on your system, please see *Upgrade Notes* in section E or F for important details.

NOTE: A MarkMagic installation cannot be performed if an independent auxiliary storage pools (ASP) is accessible. Tip: Remove all independent ASPs from your job by issuing the SETASPGRP (Set ASP Group) command and specify *NONE for the ASP Group parameter.

1. INSTALLATION / UPGRADE ROADMAP



B. INTRODUCTION TO MARKMAGIC 8

Enclosed is the latest modification level of CYBRA's MarkMagic 8 Bar Code Labels, RFID Tags, and Electronic Forms Software for the IBM System i featuring our JMagic 8 Client – the world's only WYSIWYG label and forms designer written in Java.

MarkMagic installation comes in a variety of flavors. The traditional CD based installation is still available. In addition, you have the alternative of downloading MarkMagic from the CYBRA website.

1. INSTALLATION TERMS

Install – An Install is a new installation of MarkMagic. We offer two methods of installing MarkMagic 8, via CD or via download.

Upgrade – An Upgrade is a move from version to version; for example, if you are an existing customer on MarkMagic Version 5.1 or 6.1 and you wish to install MarkMagic 8. We offer two methods of upgrading, via CD or via download.

Update – An Update is a move from one mod level to a later modification level of MarkMagic (Example: updating/replacing 7.1 Mod Level 090916 with 8.1 Mod Level 120515). We offer three methods of updating modification levels: full update via CD, full update via download, or quick update via download.

Fixes – Fixes are single updates to individual program objects and are not applicable to all customers. All fixes distributed since a Mod Lvl release will be incorporated into the next Mod Lvl release. Visit <http://www.cybra.com/resources-support> to see if any applicable fixes have been released for your modification level and printer device types.

You must be at OS/400 V5R2M0 or later to download and install MarkMagic 8 from the web. If using OS/400 V5R1 or earlier, please contact help@cybra.com. To download MarkMagic 8, visit <http://www.cybra.com/members-login>

If installing from CD, the CD contains installation programs for both MarkMagic 8 (the System i product), and JMagic 8 (the WYSIWYG client for the PC). Both, 8.1 and 8.6 are shipped on the MarkMagic Product CD.

2. WHAT'S NEW IN MARKMAGIC 8

Award-winning MarkMagic™ 8 is the easiest and fastest way to design and print the bar code labels, electronic forms, ad hoc reports, and RFID tags you need to communicate with your customers and suppliers. The culmination of years of innovative software engineering, new MarkMagic 8 is a total document development solution with features and capabilities not found in any other product on the market.

What's Great in MarkMagic 8

New MarkMagic™ 8 is more than a collection of updates. New MarkMagic 8 features breakthrough capabilities that give you more forms and report writing power, more flexibility to automate your document processing, more performance enhancements to reduce processing time, and more interface refinements to make designing bar code labels, RFID tags, forms and reports easier than ever before. Even more so than in previous versions, no technical skills are required to produce even more types of sophisticated documents with new MarkMagic 8.

Enhancements in MarkMagic 8

- **(New)** Floating Footers (also known as “Clamped Footers”) are groups of lines and fields that print after the last detail line. The Floating Footer can appear anywhere on a page of a document or report. The Floating Footer's fields can be derived from any source field with constant and/or variable data. Any field “type” can be part of the Footer Group.
- **(New)** Calculation Groups let you total spool file data or other retrieved data. Now you can define the ‘total’ field using calculation groups per page, group, report, or even running totals. More functionality, no programming.
- **(New)** Collect Pages is a new Bursting parameter that searches a multiple page spool file and collects and extracts individual pages based on a value such as Customer ID. This is great for wave based printing of invoices even if orders are placed at different times of the day and therefore intermixed in the spool file.
- **(New)** Last Page is a new PrintTransformer parameter that adds an extra page to the end of a print run (or Burst). It's a great way to add legal terms or Instructions to the end of print job or PDF..
- **(New)** Smartphone and Social Media QR Bar Code Support: MarkMagic 8 lets you add QR bar codes to any label or form and integrate marketing and promotion programs with logistics documents.

- **(New)** GreenShip - Go green with new MarkMagic support for the Sato GY412T 2-Sided Printer. Save money and save the planet by printing pick lists or return labels on the reverse side of a shipping label.
- Admin Enhancements:
 - **(New)** Print Log which, if turned on, tracks which formats (device, name, user lib, user name) are being printed/converted to PDF/faxed over the last X number of days.
 - **(New)** PrintTransformer report added to Print Analysis reports. Rules (in a given user library) and Conditions for a particular format are documented.
 - **(New)** Comment field added to format definitions.
 -

3. WHAT'S NEW IN JMAGIC 8

Enhancements in JMagic 8

- **(New)** Dynamically create *LINK Text fields by dragging DATA fields from List View Panel to the Design Canvas. Drag/Drop and the new Text field will be created as a *LINK with the data field as the source field.
- **(New)** Format Canvas Toggle to show fields that are Conditioned or Ruled or both.
- **(New)** Canvas field crosshairs now magically appear when selecting or moving a field.
- **(New)** Holding down the "Alt" Key performs a Horizontal or Vertical Lock when moving Fields via the Mouse on the JMagic Canvas.
- **(New)** Offset Option Under alignment for quick multiple field spacing. This is ideal for detail line vertical offsets.
- **(New)** New JMagic Display Objects enhance Print Preview performance by drastically improving the speed of screen refreshes. Now you can test Rules and Conditions in real time and watch the screen change dynamically.

4. ENHANCEMENTS AND FIXES IN MOD LVL 120515

Issues fixed in MarkMagic 8.1 / 8.6 120515

- DataMatrix barcodes will now print when emulating IBM AFP using Zebra
- PCL Character Set Mapping Fixes. Previously, special international characters were not printing correctly.
- Various updates made to graphic positioning on formats
- Added the ability to change the SMTP server port number
- Fixes made specifically for IBM OS V7R1 systems to remove extra java messages being sent to the display
- Fixed rare case where last page of a burst was not being included in the print data
- Updates made to Sato Barcode and Graphics printing. Fixed a rare issue that occurred when printing a SATO label with a barcode.
- Parenthesis can now be used in *CALC fields to indicate an operation that should be calculated before the others.
- FormComposer lookups that utilized packed decimal fields will now work properly.
- Added support for density 30 on Printronix Interleave 2 of 5 barcodes. This allows printing of very small Interleave 2 of 5 barcodes.
- Corrected the calculation of Zebra MSI Barcode check digits.
- Fixed Rules processing when using the semi colon to separate multiple recipients. Previously, emails were only going out to the first recipient in the list.
- You can now have more than 850 bursts happen in one RuleSet. Previously, if there were more than 850 bursts, only the last 850 would print.
- Master Format field is now updated properly when importing using *REPLACE
- Zebra Variable Graphics update. Variable graphics were not clearing at the end of a print job
- Format Conditions will now properly process when USRLIB(*SEARCH) is specified in the PRTLBLF command.
- Fixed issue that caused missing repeating data on FormComposer overflow pages
- Corrected a problem preventing Monarch MPCL Parts Across (Multi-up printing) from working properly.
- Changed placement of Zebra mode (^MM) command for easier user control of label cutting
- Updated Zebra RFID command structure and sequence to mirror official Zebra recommendations
- Can now page down when exporting MarkMagic monitors if there are more monitors listed that fit on the display page

- Fixed an error that prevented creating a PDF of a Zebra format with a graphic
- The registered ® symbol now prints correctly laser PCL formats.
- Printronix PGL batch control field LBMODE will now correctly override the format mode when printing.
- Increased length of email subject and body in PrintTransformer Rules to match maximum value in PRTLBLEF command.
- Resolved issue where RuleSets were not found if RuleSet library was set to *SEARCH and called via PRTLBLEF command.
- PrintTransformer: Resolved subscript error when switching back to a condition action used earlier in the print run. Corrected record number issue that caused incorrect page number data to be used in some scenarios. Rotated conditioned fields and formats are now consistent.
- In the rare occasion email.log is locked while MarkMagic is setting up the log file, MarkMagic will reissue the call.
- Resolved variable graphic subsequent page location issue.

Issues fixed in JMagic and Options Mod 120515

- Resolved a number of small PrintTransformer RuleSet and Condition GUI items.
- Improved EAN13 bar code WYSIWYG and added +2 and +5 WYSIWYG support.
- You should no longer be able to edit a *LINK source field without "de-linking" it first from the *LINK field.
- Huge performance increase when moving a large number of fields at one time with the keyboard arrow keys.
- "Delete Successful" box no longer shows when you answer "No" to deleting a format
- Updated the blue selection color JMagic uses. Highlighted data is now more easily readable.
- Resolved issues with JMagic converting formats from inches to millimeters
- Fixed editing and adding label file records using the Work with Label Files interface.
- VICS BOL check digit (#23) now shows as a valid check digit option in JMagic
- Graphic WYSIWYG size on Datamax formats has been resolved.
- Resolved issues with graphics that have no source images. JMagic no longer hangs when opening a format that has a graphic with no source image.

- Rulers on the left and bottom of the format are now visible at all times.
- Fixed rare case when there was an extra "save" request when closing a format.
- Export MarkMagic Fix option has been removed from the menus. This procedure should be done using MarkMagic on the server side.
- Emails did not contain a Sent Date. Corrected this problem.
- JMagic no longer sets an invalid alignment option when adding barcodes to SATO formats
- Special characters in Zebra 2D Barcodes (GS, RS, FS, EOT) will now properly encode when printing to a PDF
- UPC Human Readable text will now show properly when printing Zebra UPC labels to PDF
- Support for the HPPCL5EDG "Edge" driver is added to the PDF driver. Print offsets using the HPPCL5EDG are now visible when printing to PDF.

5. WHAT WAS UPDATED IN MARKMAGIC 7

Enhanced in MarkMagic 7

- FormComposer support added to MarkMagic Enterprise. FormComposer is a full-featured report writer with an intuitive interface which enables all kinds of reports containing headers and repeating detail lines, lookup fields from any number of associated files (included spool files), overflow handling, calculated fields, and special functions. New "Text Block" support is also part of the FormsComposer feature set.
- Text Block Field Type. MarkMagic 7 Enterprise introduced a new field type "Text Block". This field makes it easy to add paragraphs of legal information to forms or a long list of ingredients to labels. Auto-formatting helps take the guess work out of column, font, and line offset changes. Font type, *style*, and point size can be changed within the block of text.
- PrintTransformer Add-On Option: This "rules based" option includes all the format level rule features of PrintManager and a new set of field level rules.
- More Field Usage Definitions: Any variable field can have a "usage" defined as part of the field. Version 7 expanded USAGE beyond the RFID fields to FormComposer fields.
- Native PCL5 MICR support for laser checks. MarkMagic 7 downloads the special MICR (Magnetic Ink Character

Recognition) font to your printer memory turning any PCL5-compatible laser printer into a check printer.

- *PDFZ Emulated Device type. MarkMagic PDF files can be automatically “zipped” on the System i before being emailed and saved/archived to the IFS.
- Zebra to PDF Conversion - MarkMagic Zebra (zpl) formats can be created as an Adobe PDF with the same look and feel as the original printed label. Run a batch of Zebra labels and send the PDF files to your distant suppliers or remote facilities.
- Updated MarkMagic 5250 Help access via the Web. Pressing “F1” will display our detailed web documentation in your default browser.
- Admin Enhancements:
 - Export Print Manager Rule Sets & PrintMonitor Monitors to either a SAVF or PCFILE. Quickly move Rule Sets and Monitors from a development system to production.
 - License Key Visibility provides dynamic code expiration and validation information. Countdown displays days remaining for keys to expire and restores permanent license keys (Runtime print only, for example) when temporary license keys expire. MarkMagic Admin menu option displays current MarkMagic temporary and permanent keys on the system. Use F10 from MarkMagic Parameters menu.

6. WHAT WAS UPDATED IN JMAGIC 7

Enhancements in JMagic 7

- PrintTransformer Add-On Option GUI: This “rules based” option GUI allows users to define extremely complex print, fax, and email jobs with no programming. New in Version 7 was the ability to define rules at the field level. Text, Bar Code, Line, Box, Graphic, Text Block and RFID field attributes can be defined to conditionally print based on variable data or environmental variables.
- Improved Editing Bar Code, Text, and Graphic fields can be easily resized on the WYSIWYG canvas by pressing +/- on the keyboard or by dragging the field's handles in order to resize the fields directly on the canvas. Resized graphics will have a new graphic converted to the new scale when the format is saved.

- "Save As" saving option. Ability to save changes without affecting the original format. "Save As" option allows saving the currently opened format under a new name.
- Upload a batch of graphics and convert to a target printer type.
- Saved Connections The last 5 connections will be saved in the JMagic start-up window. Ideal for power users accessing multiple partitions and systems.
- Spool line/column added to quick edit panel. Fast way to display and edit your spool field mappings.
- Canvas auto-scrolls when dragging fields.
- Double click from JMagic format chooser will open the format.
- "Work with Graphics" interface. This interface more closely resembles the interface within MarkMagic for handling of graphics. Along with this now comes the ability to delete and rename source and target graphics all within JMagic.
- Right Click a field in the list or on the canvas to display a quick access menu to copy, delete, edit, etc. Available values shown depend on the field type selected. Font, style, color, spool line/column, can be changed via right click. Changing attributes of grouped similar fields is also available.

7. MARKMAGIC ADD-ON OPTIONS

Quick Comply RFID (New) Add-On Option

MarkMagic 7 supports encoding "smart" labels containing RFID tags for these seven popular thermal printer types: Monarch, Zebra, Printronix, Intermec, Sato, Datamax, and Avery Dennison. Included is support for both Class 1 and Class 0+ EPC standards as well as the more prominent Class 1, Generation 2, EPC protocol from tag manufactures. MarkMagic 7 RFID Option also supports the complex logic regarding decimal to binary to hex data conversion, so you don't have to. Just pass your System i decimal data and the RFID option will do the rest. Tag password lock/unlock and user defined data can also be defined. Quick Comply RFID lets you quickly and easily meet EPC compliance mandates with built-in item level (SGTIN) serialization. While previous versions of MarkMagic fully supported RFID tag compliance, new MarkMagic accomplishes this in a matter of minutes, rather than hours.

PrintTransformer Add-On Option (formerly called PrintManager)

MarkMagic PrintTransformer lets you print fields based on user defined conditions such as printing negative values in red, or hiding a box field if a carrier class of service does not require a box field to print. Print Transformer makes it easy to define rules at the field level. Text, Bar Code, Line, Box, Graphic, Text Block and RFID field attributes can be defined to conditionally print based on variable data or job

attributes. The rule-based option gives you the ability to redirect and modify in-process print jobs without programming. Spool files that meet user-defined criteria are manipulated and printed according to user determined rules. This eliminates programming for virtually all complex forms printing applications. Using intelligent print routing, spool files can be separated and sent to different printers and e-mail addresses based on the data in the spool file. In addition, label file records can cause several labels to be printed on different printers based on the information in the label file. The JMagic PrintTransformer GUI makes defining even the most complex rule easy. *Note: This option requires V5R2M0 or higher of OS/400, PASE & JAVA v1.4.2*

On Demand Add-On Option

MarkMagic On Demand creates a web based portal that allows your customers to securely sign on (using a userid and password) and search for and display, print or e-mail their invoices, statements, purchase orders, or other MarkMagic Forms. MarkMagic On Demand lets your customers download the forms they need, when they need them.

Print Monitor Add-On Option

Print Monitor eliminates programming for automatic MarkMagic printing. New spooled files added to a queue or a record added to a database file will trigger a MarkMagic Job to print labels or forms.

PDF Email and Fax Add-On Option

Can produce Adobe Acrobat PDF files containing searchable text and readable bar codes. PDF documents can be sent as e-mail attachments. *Note: This option requires V5R2M0 or higher of OS/400, PASE & JAVA v1.4.2*

FAX: Any format designed using the MarkMagic HPPCL5, HPLJ4P, or AFPDS printer device types can now be faxed directly from the System i. This option requires IBM Facsimile Support for System i (licensed program: 5798FAX) to be installed and functional with a fax profile that has enhanced services enabled. To use the Fax capability, either the SNDMMFAX or PRTLBLF command can be used. (Note: in order to take advantage of MarkMagic's automatic PCL graphic conversion to AFPDS the user must be enrolled in the system directory (WRKDIRE), the source image must in the MarkMagic graphics gallery, and licensed program: 5722AF1, IBM AFP Utilities must be enabled.

Laser Printer 2D Bar Code Add-On Option

Select this option if you need to print UPS Maxicode, PDF417 or DataMatrix 2D bar codes on HP PCL Laser or IBM AFP or IPDS laser printers.

FormWeaver Add-On Option

The FormWeaver option enables printing of documents that merge up to 100 formats. An example of merged formats would be a pick ticket or invoice form with a shipping label in the lower left hand corner. FormWeaver Documents can also consist of two or more different formats, each on a separate page, for each input record. An example of multiple formats per input record would be a printed bill of lading that contains a duplexed back page with special instructions.

8. VERSION HISTORY

A complete list of MarkMagic & JMagic enhancements and updates can be found at: <http://www.cybra.com/documentations/markmagic-version-history>

9. LICENSE INFORMATION

The MarkMagic 8 licensing scheme requires that we know your processor group, in addition to the CPU model and serial number. Also we need to know whether MarkMagic will be run in more than one logical partition (LPAR).

Note: A new MarkMagic 8.1 or 8.6 license code is required for all MarkMagic version 6.1, 6.5, 7.0, 7.1, 7.5 and 7.6 upgrades.

The following command will display your Processor Group: **WRKLCINF** (Work with License Information) Please include the following information in your MarkMagic 7 product key requests:

CPU Model 3 Character value
 Processor Group P05, P10, P20, P30, P40,P50
 CPU Serial # 7 Character value
 LPAR# 000 through 999 (unlimited)

You will not be able to access your LPAR number if you do not have a previous version of MarkMagic on your system. If this is the case, please let your sales representative know. We will issue you a temporary code with a default LPAR#. After you install MarkMagic you can access your LPAR# with the following command:

MRKMAG80/SETMMPRM

10. MIRRORING INFORMATION OVERVIEW

Any System i deemed as a Disaster Recovery or Back Up system must have MarkMagic8 “installed” on the system and a valid authorization code. Saving objects from Prod system to DR system is not sufficient. Please install from CD or Download before mirroring formats, jobs, graphics, rules, monitors, and conditions from your Prod system.

Note: The objects listed below are meant as an overview of areas where you need to be careful. This is not intended to be a comprehensive list. Please contact help@cybra.com with any questions.

- 1) MarkMagic licensing data is saved in LICPRD libraries which correlate to the MM version number (see below examples). Customers should not mirror these libraries.

```
MM81LICPRD
MM86LICPRD
```

- 2) MarkMagic DATA Areas, DATAQs, and User Spaces in MRKMAGDTA, MRKMAGXX, and MRKMAGUSRP should not be mirrored.

Examples:

- Data Area MMPRODKEYS in library MRKMAGXX should not be mirrored.
- Data Queues in MRKMAGDTA Library used to transfer bar code image data should not be mirrored.

Object	Type	Text
GRARCVDTAQ	*DTAQ	Graphics received data queue
GRARQSDTAQ	*DTAQ	Graphics request data queue

- Library MRKMAGUSRP contains several User Spaces and should not be mirrored.

- 3) MarkMagic Objects in Library QGPL should not be mirrored.

C. CD INSTRUCTIONS - NEW INSTALLATION

1. INSTALLATION

Sign on to a new session as QSECOFR and confirm both QTEMP and QGPL are on your library list.

Insert the CD into the drive, and enter the following on an AS/400 command line:

LODRUN dddddd (where dddddd is the optical device name).

Once the LODRUN command is executed, the install procedure automatically confirms your OS release, copies the compatible 8.1 or 8.6 libraries from the CD to QTEMP and the MarkMagic install program will start running. The first screen that is displayed is a message that you are installing MarkMagic 8, mod 120515. Enter G to continue or C to cancel.

MarkMagic will load automatically and prompt you at various points for information such as your product keys and device types. When the install is complete, you will be prompted to sign off and then sign back on. The entire installation of MarkMagic should take less than 30 minutes.

Towards the end of the installation process, you will see the Set MarkMagic Parameters Screen:

```

Set MarkMagic Parameters

Date:  4/24/12      CPU model type:  520      Version:  8.1
Time: 11:36:14     CPU serial num: 10B0724   Mod lvl: 120515
                          Processor group: P10
                          Logical partitn: 001

Type choices, press Enter.

Printer device types . . . ☒ ALL          F4 for list
_____
_____
_____
_____
_____
_____
_____
_____
_____

More...
F3=Exit  F5=Refresh  F8=Product Keys  F10=Prod Key Detail  F12=Cancel

```

Add any additional device types or *ALL to test with all available device types.

Press F8 to Set MarkMagic Product Keys (Call your Account Manager or CYBRA Sales at 914-963-6600 Option 3 for a MarkMagic 7 rental key).

```

Set MarkMagic Product keys

Date: 4/24/12      CPU model type: 520      Version: 8.1
Time: 12:16:00    CPU serial num: 10B0724   Mod lvl: 120515
                  Processor group: P10
                  Logical partitn: 001

Type choices, press Enter.

Product keys      Expiration      LPAR      Maximum      Maximum
                  (mm/dd/yy)
1. 664D2 BCF3C 75D60 7F301 06 / 30 / 12 1 999999 999999
   85GF5 12104 48401 Z4011 99 / 99 / 99 1 999999 999999
   _____ 00 / 00 / 00 0 0 0
   _____ 00 / 00 / 00 0 0 0
   _____ 00 / 00 / 00 0 0 0
   _____ 00 / 00 / 00 0 0 0
   _____ 00 / 00 / 00 0 0 0
   _____ 00 / 00 / 00 0 0 0
   _____ 00 / 00 / 00 0 0 0
   _____ 00 / 00 / 00 0 0 0

F3=Exit  F5=Refresh  F8=Work with license information  F12=Cancel

```

Default 45 day Labels Runtime (Print Only) product key is enabled if no product key is entered.

The rental key you will be given will enable ALL MarkMagic features. Customers who receive permanent keys will require multiple product keys to activate the following MarkMagic 7 optional features:

- Print Monitor Option
- PDF Fax & Email Option
- Laser Printer 2D Option
- RFID Printing Option (Quick Comply)
- FormWeaver Option
- PrintTransformer Option
- On Demand Option

Once the installation is complete, please sign off your QSECOFR session to close and deallocate any open files. Sign back on and begin using MarkMagic.

2. TROUBLESHOOTING

Two MarkMagic Installation Logs are created upon completion of installation. The summary log contains MarkMagic installation comments, while the detail log also includes the full job log. The log's details are:

Spooled Filename: MARKMAGIC User data: INSTALLLOG

In addition, the detail log is written to the following database file:

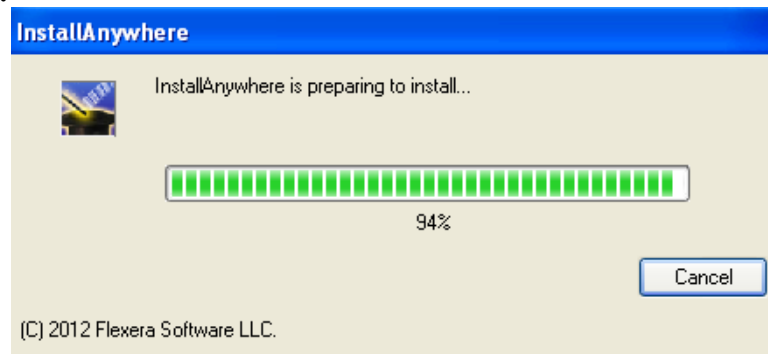
Library: QGPL File: MMINSLLOG

If you have trouble installing MarkMagic 8 we request that you e-mail us the summary log immediately following your installation. If the installation is unsuccessful, there will most likely not be a printed install log. Please send the log file in QGPL to help@cybra.com

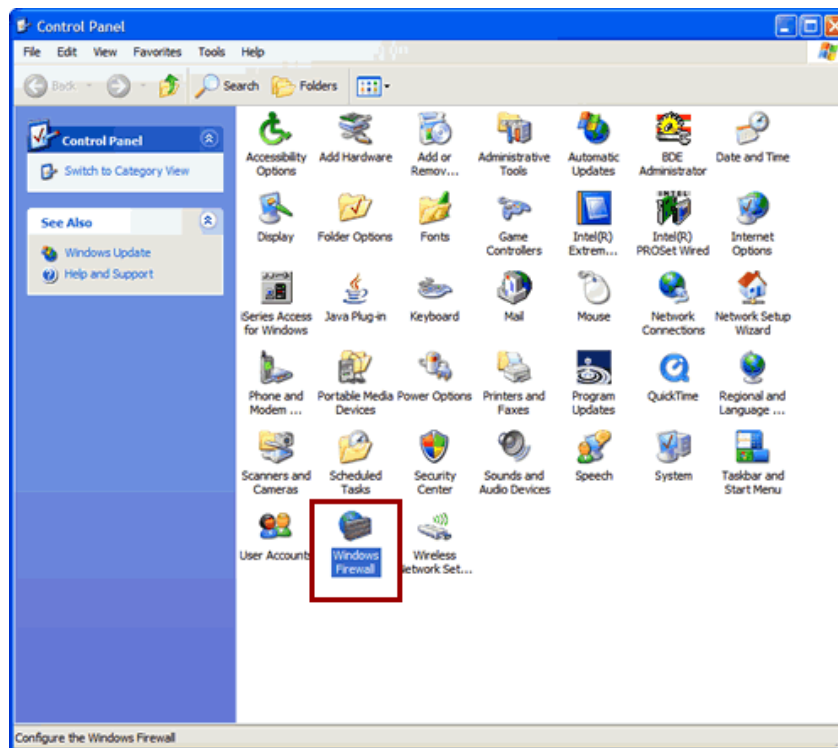
D. DOWNLOAD INSTRUCTIONS - NEW INSTALLATION

1. BEFORE YOU BEGIN

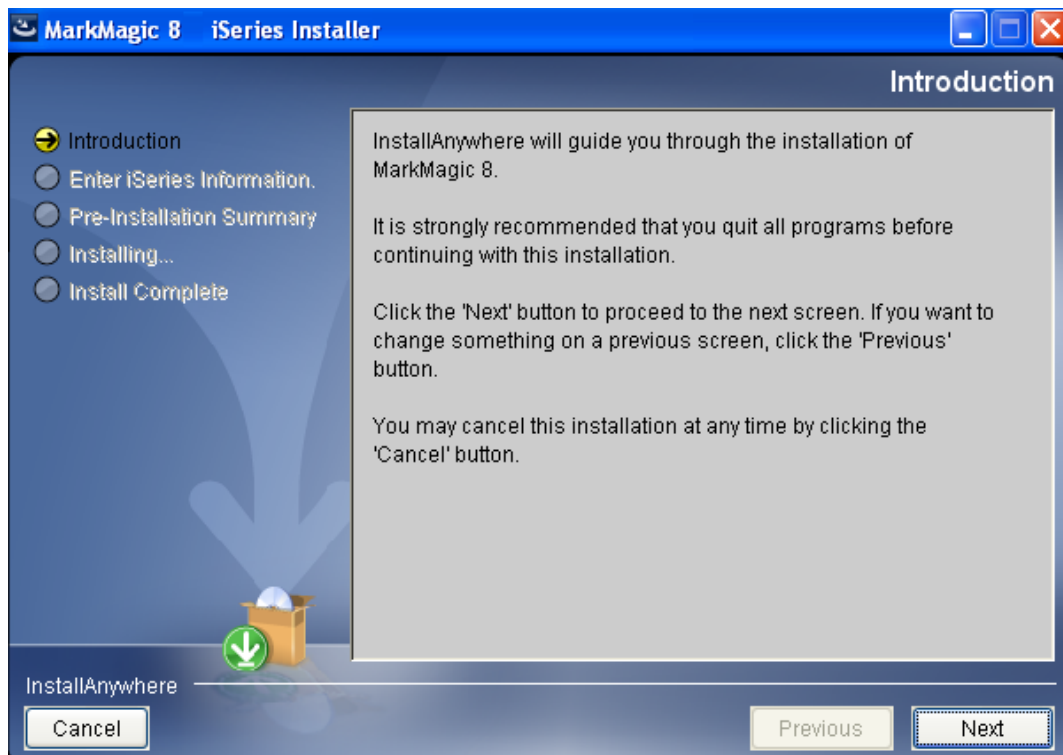
- Depending on your system's OS release, click on the appropriate MarkMagic 8 link (MarkMagic 8.1 for OS releases V5R3 through V5R4 or MarkMagic 8.6 for OS release V6R1M0 and above) to download. If you are prompted to open or save the .zip file, save it to a temporary directory on your PC.
- Once the download is complete, find the downloaded file and extract the zip file contents. The enclosed file will have an .EXE extension. Double click on the icon to begin the MarkMagic 8 InstallAnywhere installation process.



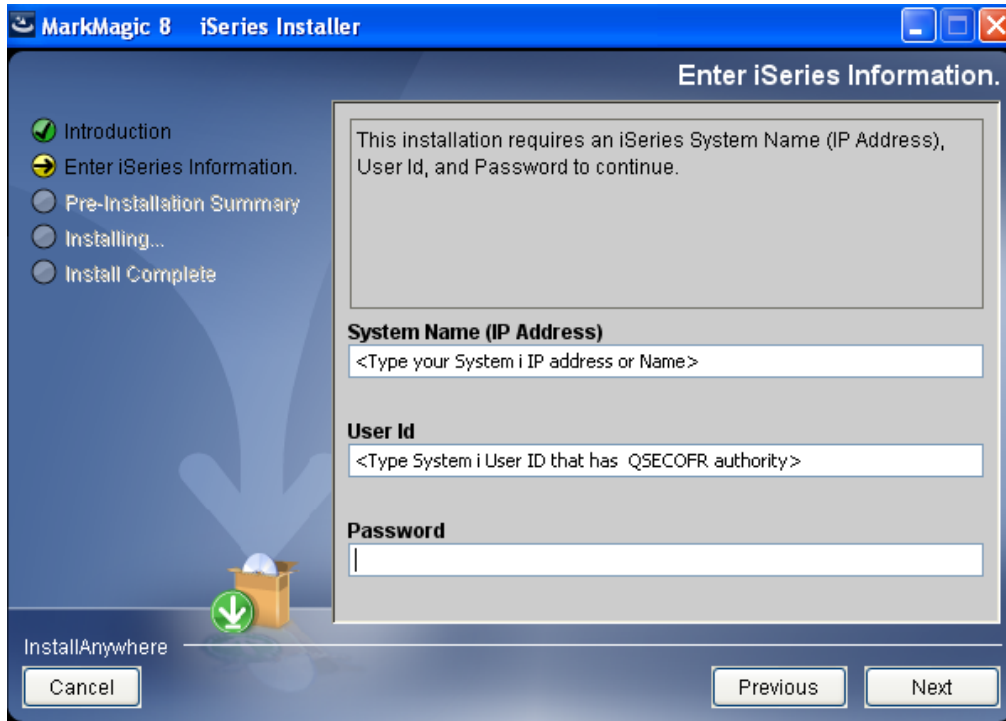
- Make sure any firewalls that you may have installed do not block the install, and also confirm that FTP is configured and running on your System i.
- **NOTE: Windows XP SP2 users will have to temporarily disable the Windows Firewall by clicking START > CONTROL PANEL > WINDOWS FIREWALL and clicking the radio button for "Off". Once the Firewall is disabled, the MarkMagic 8 install process will complete without any errors.**



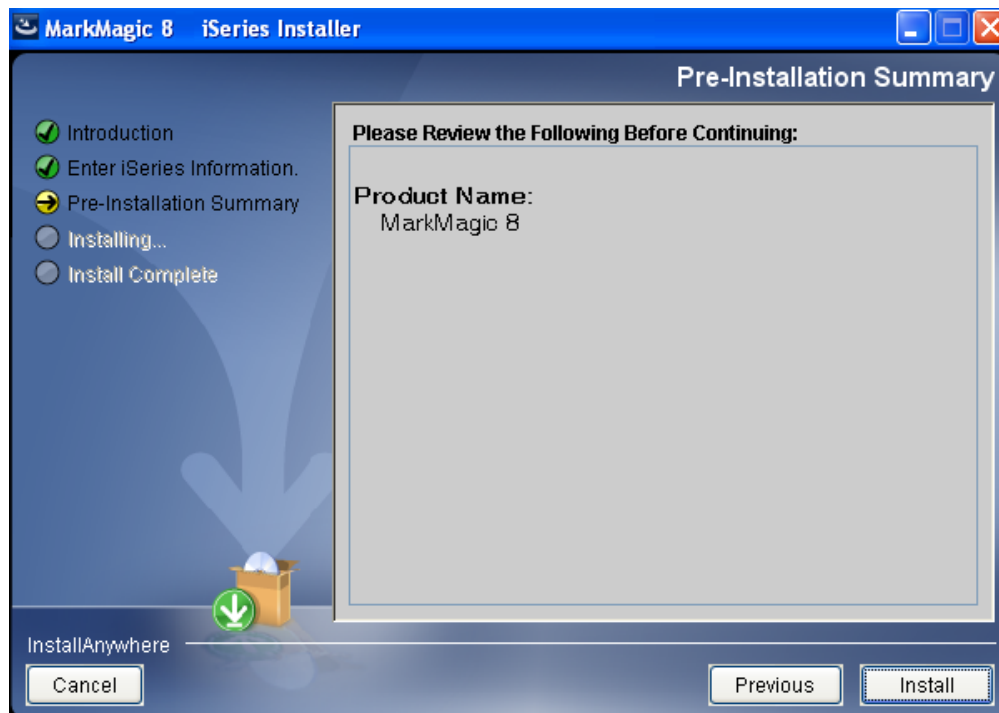
- Follow the MarkMagic 8 installation prompts by clicking "Next"



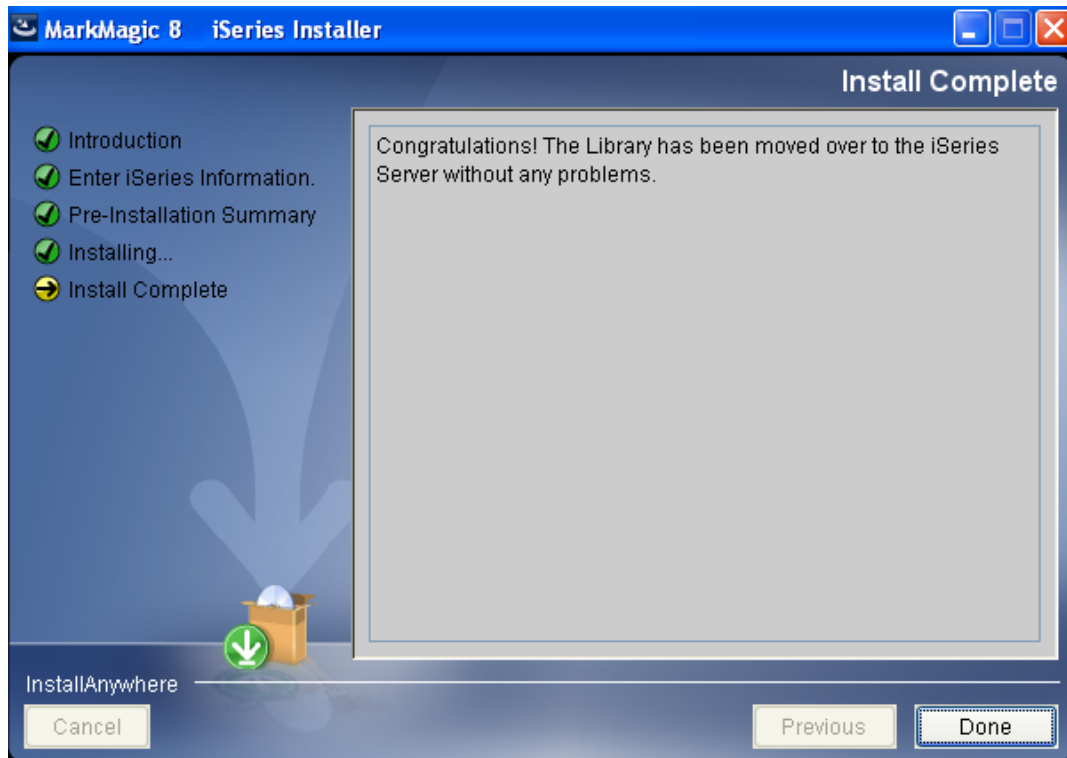
- You will reach the “MarkMagic 8 iSeries Installer” panel. There you enter the name or IP address of the CPU on which you would like to install MarkMagic 8. Also enter your iSeries user id and password (we recommend your ID have QSECOFR authority). Then click “Next”.



- You will be presented with the “Pre-Installation Summary”. Click Install.



- When the MarkMagic 8 process is completed, you will have a library named MM80TEMP on the System i. At this point you can restart your Windows XP SP2 Firewall, if applicable.



2. INSTALLATION

Sign on to a new session as **QSECOFR**, confirm both QTEMP and QGPL are on your library list and then enter the following command:

MM80TEMP/INSTALL.

The first screen that is displayed is a message that you are installing MarkMagic 8, mod 120515. Enter G to continue or C to cancel.

MarkMagic will load automatically and prompt you at various points for information such as your product keys and device types. When the install is complete, you will be prompted to sign off and then sign back on. The entire installation of MarkMagic should take less than 30 minutes.

Towards the end of the installation process, you will see the Set MarkMagic Parameters screen:

```

Set MarkMagic Parameters

Date:  4/24/12      CPU model type:  520      Version:  8.1
Time:  11:36:14    CPU serial num:  10B0724    Mod lvl:  120515
                          Processor group: P10
                          Logical partitn: 001

Type choices, press Enter.

Printer device types . . . ☒ ALL          F4 for list
_____
_____
_____
_____
_____
_____
_____
_____

More...
F3=Exit  F5=Refresh  F8=Product Keys  F10=Prod Key Detail  F12=Cancel

```

Add any additional device types or *ALL to test with all available device types.

Press F8 to Set MarkMagic product keys (Call your account manager or CYBRA Sales at 914-963-6600 Option 3 for a MarkMagic 7 rental key).

```

Set MarkMagic Product keys

Date:  4/24/12      CPU model type:  520      Version:  8.1
Time:  12:16:00    CPU serial num:  10B0724    Mod lvl:  120515
                          Processor group: P10
                          Logical partitn: 001

Type choices, press Enter.

Product keys          Expiration          Maximum          Maximum
                      (mm/dd/yy)          Users           Printers
1. 664D2 BCF3C 75D60 7F301 06 / 30 / 12    1             999999          999999
   85GF5 12104 48401 24011 99 / 99 / 99    1             999999          999999
   _____ _____ _____ _____ 00 / 00 / 00    0              0
   _____ _____ _____ _____ 00 / 00 / 00    0              0
   _____ _____ _____ _____ 00 / 00 / 00    0              0
   _____ _____ _____ _____ 00 / 00 / 00    0              0
   _____ _____ _____ _____ 00 / 00 / 00    0              0
   _____ _____ _____ _____ 00 / 00 / 00    0              0
   _____ _____ _____ _____ 00 / 00 / 00    0              0
   _____ _____ _____ _____ 00 / 00 / 00    0              0
   _____ _____ _____ _____ 00 / 00 / 00    0              0

F3=Exit  F5=Refresh  F8=Work with license information  F12=Cancel

```

The Default 45 day Labels Runtime (Print Only) product key is enabled if no product key is entered.

The rental key you will be given will enable ALL MarkMagic features. Customers who receive permanent keys will require multiple product keys to activate the following MarkMagic 8 optional features:

- Print Monitor Option
- PDF Fax & Email Option
- Laser Printer 2D Option
- RFID Printing Option (Quick Comply)
- FormWeaver Option
- PrintTransformer Option
- On Demand Option

Once the installation is complete, **please sign off** your QSECOFR session to close and deallocate any open files. Sign back on and begin using MarkMagic.

3. TROUBLESHOOTING

Two MarkMagic Installation Logs are created upon completion of installation. The summary log contains MarkMagic installation comments, while the detail log also includes the full job log. The log's details are:

Spooled Filename: MARKMAGIC User data: INSTALLLOG

In addition, the detail log is written to the following database file:

Library: QGPL File: MMINSLOG

If you have trouble installing MarkMagic 8 we request that you e-mail us the summary log immediately following your installation. If the installation is unsuccessful, there will most likely not be a printed install log. Please send the log file in QGPL to help@cybra.com

E. CD INSTRUCTIONS - UPGRADE

1. BEFORE YOU BEGIN

UPGRADE NOTES:

- If you upgraded from MarkMagic V6.1 or V6.5 or V7.2 or V7.7 to V8.1 or 8.6, your formats will be available in both versions, in each of your user libraries. Any changes to formats or new formats created after the installation will have to be exported out of one version and imported into the other version.
- Although this situation is unlikely, it is important to understand MarkMagic 8 will upgrade from the most recent MarkMagic version on your system, even if an older version is set as your system default. **Example:** If both 6.1 (MRKMAG60) and 7.2 (MRKMAG70) are installed and 6.1 is your *SYSTEM default running your everyday production, MarkMagic will “see” 7.2 and upgrade any formats, jobs, graphics, and monitors found in 7.2. **Note:** renaming or deleting MRKMAG70 in this scenario will **not** force the upgrade of your 6.1 objects. In other words, the upgrade program does not allow a user to “skip over” a version. Please use the MRKMAG60/WRKMMVSN or MRKMAG70/WRKMMVSN command to help determine if multiple MarkMagic versions are installed and which is the most recent (more WRKMMVSN details can be found later in this section).

Do **not** remove or rename the MarkMagic product library MRKMAG60, MRKMAG70, or any MarkMagic User Libraries (MRKMAGDTA, etc.). The installation process will convert your existing formats to the new version.

Before installing your new version, make sure that:

- No one has the MarkMagic library (MRKMAG60 or MRKMAG70) or the MarkMagic User library (MRKMAGDTA) in his or her library list, and also make sure that no one is working with MarkMagic or JMagic. For example, to see if someone is using MarkMagic sign on with SECOFR authority and enter **WRKOBJLCK OBJ(MRKMAGxx) OBJTYPE(*LIB)**. Also, enter the Work with Active Jobs (WRKACTJOB) command on an OS/400 command line. Look at the column “Function” for CMD-STRMRKMAG.
- The MarkMagic library (MRKMAGDTA) is not locked. To see if the MarkMagic User library files are “locked,” enter the Work with Object Locks (**WRKOBJLCK OBJ(DEVPFxx) OBJTYPE(*FILE)**) command on the AS/400 command line, and press F4. Type DEVPFxx for the object name, MRKMAGDTA for the library, and *FILE for the object type, and press ENTER. Look at the column “Users” to see who is working with MarkMagic. Ask them to sign off the system in order to release the MarkMagic libraries and files.
- If you are upgrading from MarkMagic 6 or MarkMagic 7 and using the MarkMagic Monitor Option, please make sure to end your monitor before upgrading. Type: **CALL PGM(MRKMAG60/ENDMONPGM) PARM(' '),** and

press Enter to end the MarkMagic 6 print monitor (use MRKMAG70 to end MarkMagic 7)

- We recommend that you save your MarkMagic libraries (MRKMAG60, or MRKMAG70, and MRKMAGDTA) and User libraries prior to installation.

After following the above steps, **sign off the system** and sign on to a new session as QSECOFR and confirm both QTEMP and QGPL are on your library list

2. INSTALLATION

Insert the CD into the drive, and enter the following on an AS/400 command line:

LODRUN dddddd (where dddddd is the optical device name).

Once the LODRUN command is executed, the upgrade procedure confirms your OS release and copies the compatible MarkMagic 8.1 or MarkMagic 8.6 libraries from the CD to QTEMP. MarkMagic will load automatically and prompt you at various points for information such as your product keys, device types, and default version (see Setting MarkMagic Versions).

If you are upgrading from a previous version, you will get the following message: *MarkMagic is about to be updated from a previous version.* During the upgrade the following messages will be displayed:

- Your existing version of MarkMagic is about to be upgraded. Enter C to cancel or G to continue the upgrade (C G)
- MarkMagic is about to be upgraded from a previous version. Which version should be the system wide default (6.1, 8.1) (We recommend that you choose your current production version and test MarkMagic 8 based off *SESSION or *USER version control. Once satisfied with MarkMagic 8, the system version can be changed. See WRKMMVSN and SETMMVSN later in this section for more information on version control.

```

Set MarkMagic Parameters

Date:  4/24/12      CPU model type:  520      Version:  8.1
Time:  11:36:14    CPU serial num:  10B0724   Mod lvl:  120515
                          Processor group: F10
                          Logical partiitn: 001

Type choices, press Enter.

Printer device types . . . ☐ ALL _____ F4 for list
                           _____
                           _____
                           _____
                           _____
                           _____
                           _____
                           _____
                           _____
                           _____

More...
F3=Exit  F5=Refresh  F8=Product Keys  F10=Prod Key Detail  F12=Cancel

```

Towards the end of the installation process, you will see the Set MarkMagic Parameters screen. Add any additional device types or ***ALL** to test with all available device types.

Press F8 to Set MarkMagic product keys (Call your account manager or CYBRA Sales at 914-963-6600 Option 3) for a MarkMagic 7 rental key. The Default 45 day Labels Runtime (Print Only) product key is enabled if no product key is entered.


```

Set MarkMagic Product keys

Date: 4/24/12      CPU model type: 520      Version: 8.1
Time: 12:16:00    CPU serial num: 10B0724   Mod lvl: 120515
                  Processor group: P10
                  Logical partitn: 001

Type choices, press Enter.

Product keys      Expiration      LPAR      Maximum      Maximum
                  (mm/dd/yy)
1. 664D2 BCF3C 75D60 7F301 06 / 30 / 12 1 999999 999999
   85GF5 12104 48401 Z4011 99 / 99 / 99 1 999999 999999
   _____ 00 / 00 / 00 0 0 0
   _____ 00 / 00 / 00 0 0 0
   _____ 00 / 00 / 00 0 0 0
   _____ 00 / 00 / 00 0 0 0
   _____ 00 / 00 / 00 0 0 0
   _____ 00 / 00 / 00 0 0 0
   _____ 00 / 00 / 00 0 0 0
   _____ 00 / 00 / 00 0 0 0

F3=Exit  F5=Refresh  F8=Work with license information  F12=Cancel

```

The rental key you will be given will enable ALL MarkMagic features. Customers who receive permanent keys will require multiple product keys to activate the following MarkMagic 7 optional features:

- Print Monitor Option
- PDF Fax & Email Option
- Laser Printer 2D Option
- RFID Printing Option (Quick Comply)
- FormWeaver Option
- PrintTransformer Option
- On Demand Option

Once the installation is complete, **please sign off** your QSECOFR session to close and deallocate any open files. We recommend you sign back on and confirm your default MarkMagic version selection by entering MRKMAG80/WRKMMVSN and checking the "Current System Version" before you begin using your new version.

SETTING MARKMAGIC VERSIONS:

The Work MarkMagic Version command displays current system and user version settings and is the preferred method to switch the active version based on user and *SYSTEM. To use this command, type MRKMAG80/WRKMMVSN and press Enter.

Note: *SECOFR authority is required to change other User and system default settings.

The Set MarkMagic Version command is an alternate method to switch the active version based on user, session, or system wide. To use this command, type **MRKMAG80/SETMMVSN** and press F4. The SETMMVSN command settings are referred to by the system for all non-qualified calls to MarkMagic. Note: *SECOFR authority is required to change other User and system default settings.

Note:

- SESSION version overrides are controlled by a data area in QTEMP and only work for interactive jobs. Any print job submitted to batch will default back to either the *SYSTEM or *USER version override.
- USER version overrides are controlled by a data area in MRKMAGUSRP. *USER overrides will not be found if a CHGJOB was issued and the user was changed or the user was changed in the SBMJOB command.

When starting MarkMagic via the STRMRKMAG command, you can override the default version. Type STRMRKMAG and press F4. Select a version and press Enter

TO REVERT TO A PREVIOUS MOD LEVEL:

The installation program does not delete your previous libraries; they are renamed and saved in SAVF format. If, after installation, you wish to revert back to your previous modification level, contact CYBRA Support for assistance in restoring the following saved libraries.

Note: During the MarkMagic 8 upgrade, programs in your older MarkMagic version (MRKMAG60 or MRKMAG70) are replaced with newer programs that allow MarkMagic 8 to run side by side with 6.1/6.5 and/or 7.2/7.7. A copy of the original MRKMAG60 or MRKMAG70 programs, depending on which version you upgraded from, are saved to a SAVF in the production library (MRKMAG60 or MRKMAG70). The name of the file is MMxxyyyyyy where xx = production library number (60 or 70) and yyyyyy = the version 8 mod level you upgrade to (120515). These older programs can be restored to your live production library. Please contact help@cybra.com or 914-963-6600 option 4 for assistance.

3. TROUBLESHOOTING

Two MarkMagic Installation Logs are created upon completion of installation. The summary log contains MarkMagic installation comments, while the detail log also includes the full job log. The log's details are: Spooled Filename: MARKMAGIC User data: INSTALLLOG

In addition, the detail log is written to the following database file:

Library: QGPL File: MMINSLLOG

If you have trouble installing MarkMagic 8 we request that you e-mail us the summary log immediately following your installation. If the installation is unsuccessful, there will most likely not be a printed install log. Please send the log file in QGPL to help@cybra.com

F. DOWNLOAD INSTRUCTIONS - UPGRADE

1. BEFORE YOU BEGIN

UPGRADE NOTES:

- If you upgraded from MarkMagic V6.1 or V6.5 or V7.2 or V7.7 to V8.1 or 8.6, your formats will be available in both versions, in each of your user libraries. Any changes to formats or new formats created after the installation will have to be exported out of one version and imported into the other version.
- Although this situation is unlikely, it important to understand MarkMagic 8 will upgrade from the most recent MarkMagic version on your system, even if an older version is set as your system default. **Example:** If both 6.1 (MRKMAG60) and 7.2 (MRKMAG70) are installed and 6.1 is your *SYSTEM default running your everyday production, MarkMagic will “see” 7.2 and upgrade any formats, jobs, graphics, and monitors found in 7.2. *Note:* renaming or deleting MRKMAG70 in this scenario will not force the upgrade of your 6.1 objects. In other words, the upgrade program does not allow a user to “skip over” a version. Please use the MRKMAG60/WRKMMVSN or MRKMAG70/WRKMMVSN command to help determine if multiple MarkMagic versions are installed and which is the most recent (more WRKMMVSN details can be found later in this section).

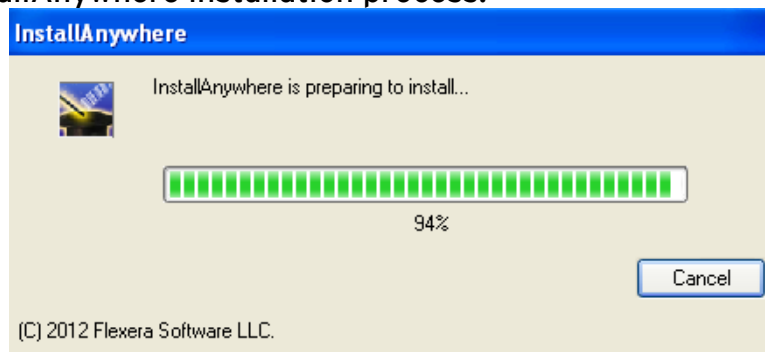
Do **not** remove or rename the MarkMagic product library MRKMAG60, MRKMAG70, or any MarkMagic User Libraries (MRKMAGDTA, etc.). The installation process will convert your existing formats to the new version.

Before installing your new version, make sure that:

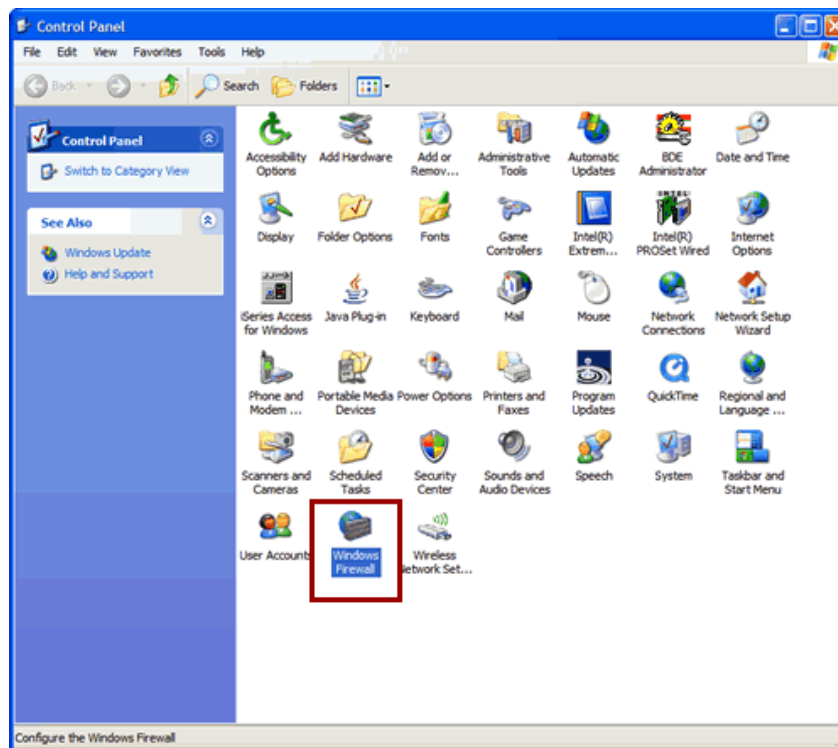
- No one has the MarkMagic library (MRKMAG60 or MRKMAG70) or the MarkMagic User library (MRKMAGDTA) in his or her library list, and also make sure that no one is working with MarkMagic or JMagic.
For example, to see if someone is using MarkMagic sign on with SECOFR authority and enter **WRKOBJLCK OBJ(MRKMAGxx) OBJTYPE(*LIB)**. Also, enter the Work with Active Jobs (WRKACTJOB) command on an OS/400 command line. Look at the column “Function” for CMD-STRMRKMAG.
- The MarkMagic library (MRKMAGDTA) is not locked. To see if the MarkMagic User library files are “locked,” enter the Work with Object Locks (**WRKOBJLCK OBJ(DEVPFxx) OBJTYPE(*FILE)**) command on the AS/400 command line, and

press F4. Type DEVPFxx for the object name, MRKMAGDTA for the library, and *FILE for the object type, and press ENTER. Look at the column "Users" to see who is working with MarkMagic. Ask them to sign off the system in order to release the MarkMagic libraries and files.

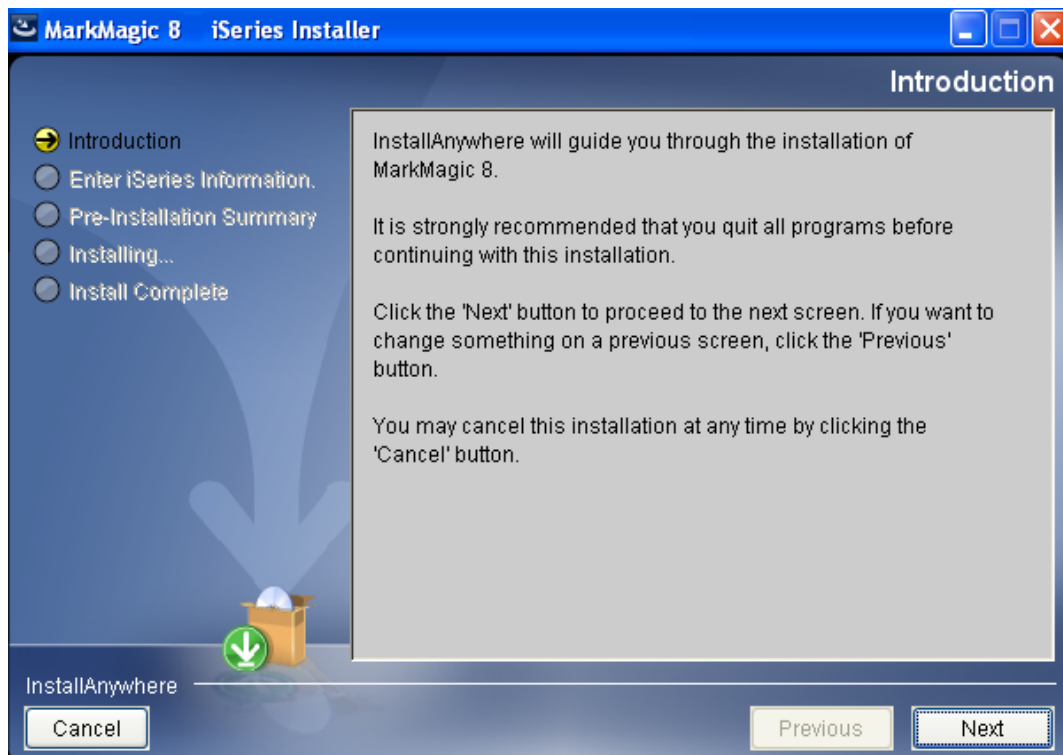
- If you are upgrading from MarkMagic 6 or MarkMagic 7 and using the MarkMagic Monitor Option, please make sure to end your monitor before upgrading. Type: **CALL PGM(MRKMAG60/ENDMONPGM) PARM(' ')**, and press Enter to end the MarkMagic 6 print monitor (use MRKMAG70 to end MarkMagic 7)
- We recommend that you save your MarkMagic libraries (MRKMAG60, or MRKMAG70, and MRKMAGDTA) and User libraries prior to installation.
- Depending on your system's OS release, click on the appropriate MarkMagic 8 link (MarkMagic 8.1 for OS releases V5R3 through V5R4 or MarkMagic 8.6 for OS release V6R1M0 and above) to download. If you are prompted to open or save the .zip file, save it to a temporary directory on your PC.
- Once the download is complete, find the downloaded file and extract the zip file contents. The enclosed file will have an .EXE extension. Double click on the icon to begin the MarkMagic 8 InstallAnywhere installation process.



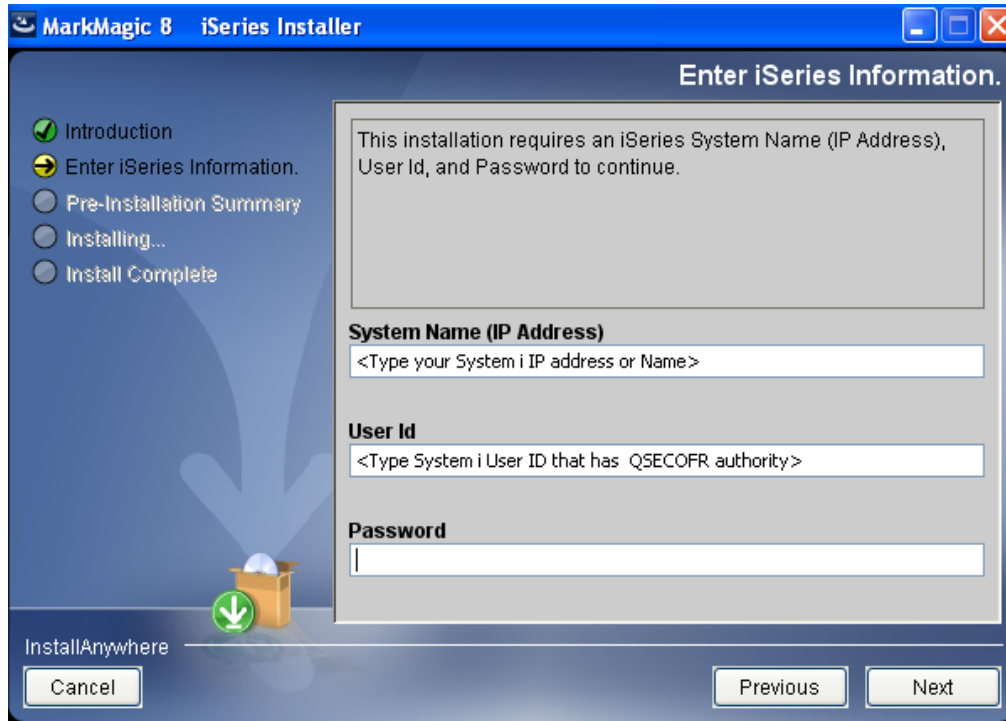
- Make sure any firewalls that you may have installed do not block the install, and also confirm that FTP is configured and running on your System i.
- **NOTE: Windows XP SP2 users will have to temporarily disable the Windows Firewall by clicking START > CONTROL PANEL > WINDOWS FIREWALL and clicking the radio button for "Off". Once the Firewall is disabled, the MarkMagic 8 install process will complete without any errors.**



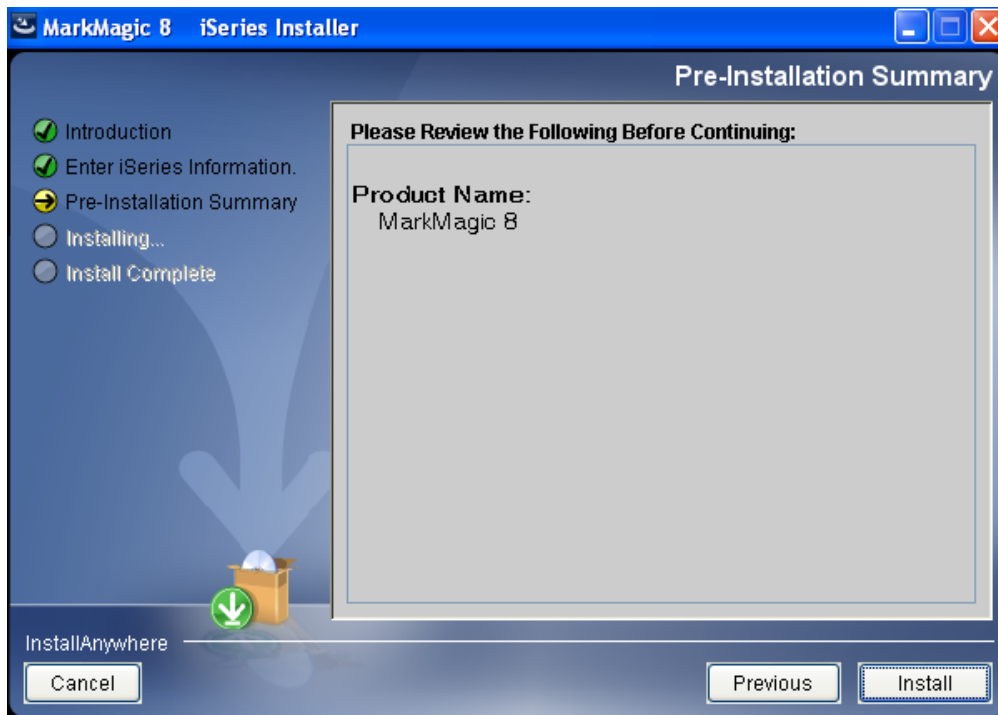
- Follow the MarkMagic 8 installation prompts by clicking "Next"



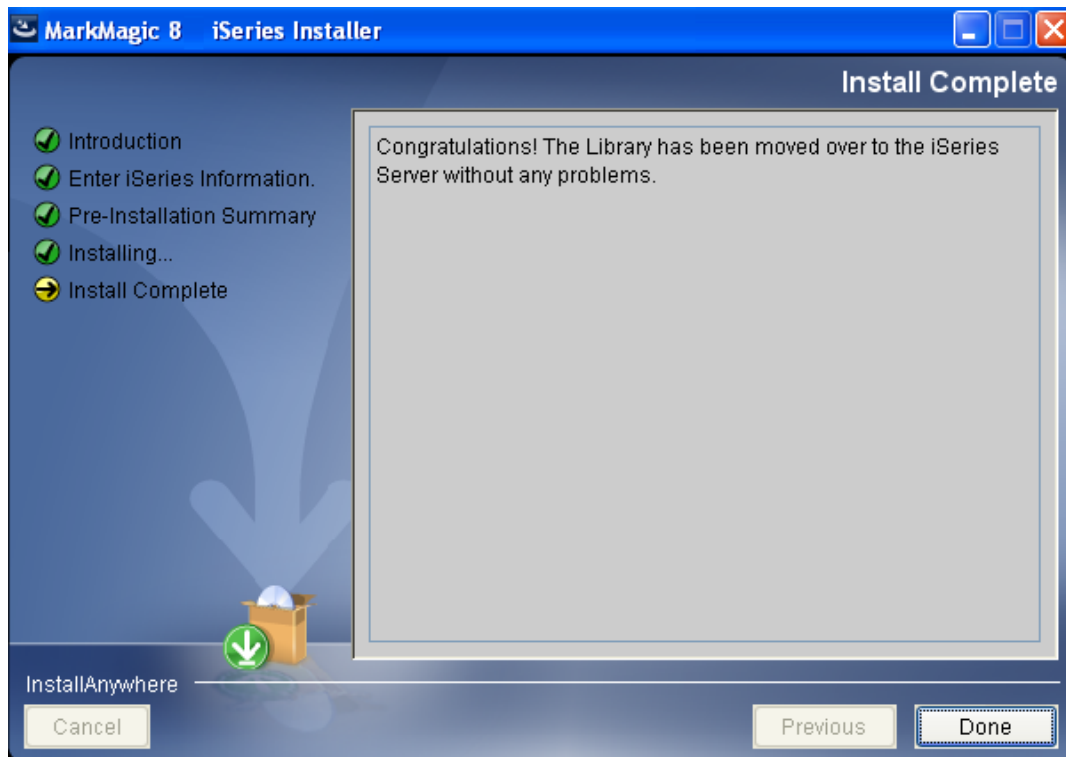
- You will reach the “MarkMagic 8 iSeries Installer” panel. There you enter the name or IP address of the CPU on which you would like to install MarkMagic 8. Also enter your iSeries user id and password (we recommend your ID have QSECOFR authority). Then click “Next”.



- You will be presented with the “Pre-Installation Summary”. Click Install.



- When the MarkMagic 8 process is completed, you will have a library named MM80TEMP on the System i. At this point you can restart your Windows XP SP2 Firewall, if applicable.



2. INSTALLATION

Sign on to a new session as **QSECOFR**, confirm both QTEMP and QGPL are on your library list and then enter the following command:

MM80TEMP/INSTALL

If you are upgrading from a previous version, you will get the following message: *MarkMagic is about to be updated from a previous version.* During the upgrade the following messages will be displayed:

- Your existing version of MarkMagic is about to be upgraded. Enter C to cancel or G to continue the upgrade (C G)
- MarkMagic is about to be upgraded from a previous version. Which version should be the system wide default (6.1, 8.1) (We recommend that you choose your current production version and test MarkMagic 8 based off *SESSION or *USER version control. Once satisfied with MarkMagic 8, the system version can be changed. See WRKMMVSN and SETMMVSN later in this section for more information on version control.

```

Set MarkMagic Parameters

Date:  4/24/12      CPU model type:  520      Version:  8.1
Time:  11:36:14    CPU serial num:  10B0724   Mod lvl:  120515
                          Processor group:  P10
                          Logical partiitn: 001

Type choices, press Enter.

Printer device types . . . ☒ ALL          F4 for list
                           _____
                           _____
                           _____
                           _____
                           _____
                           _____
                           _____
                           _____
                           _____

More...
F3=Exit  F5=Refresh  F8=Product Keys  F10=Prod Key Detail  F12=Cancel

```

Towards the end of the installation process, you will see the Set MarkMagic Parameters screen. Add any additional device types or ***ALL** to test with all available device types.

Press F8 to Set MarkMagic product keys (Call your account manager or CYBRA Sales at 914-963-6600 Option 3) for a MarkMagic 7 rental key. The Default 45 day Labels Runtime (Print Only) product key is enabled if no product key is entered.

```

Set MarkMagic Product keys

Date: 4/24/12      CPU model type: 520      Version: 8.1
Time: 12:16:00    CPU serial num: 10B0724   Mod lvl: 120515
                  Processor group: P10
                  Logical partitn: 001

Type choices, press Enter.

Product keys      Expiration      Maximum      Maximum
                  (mm/dd/yy)      LPAR      Users      Printers
1. 664D2 BCF3C 75D60 7F301 06 / 30 / 12 1 999999 999999
   85GF5 12104 48401 Z4011 99 / 99 / 99 1 999999 999999
   _____ 00 / 00 / 00 0 0 0
   _____ 00 / 00 / 00 0 0 0
   _____ 00 / 00 / 00 0 0 0
   _____ 00 / 00 / 00 0 0 0
   _____ 00 / 00 / 00 0 0 0
   _____ 00 / 00 / 00 0 0 0
   _____ 00 / 00 / 00 0 0 0
   _____ 00 / 00 / 00 0 0 0

F3=Exit F5=Refresh F8=Work with license information F12=Cancel

```

The rental key you will be given will enable ALL MarkMagic features. Customers who receive permanent keys will require multiple product keys to activate the following MarkMagic 7 optional features:

- Print Monitor Option
- PDF Fax & Email Option
- Laser Printer 2D Option
- RFID Printing Option (Quick Comply)
- FormWeaver Option
- PrintTransformer Option
- On Demand Option

Once the installation is complete, please sign off your QSECOFR session to close and deallocate any open files. We recommend you sign back on and confirm your default MarkMagic version selection by entering MRKMAG80/WRKMMVSN and checking the "Current System Version" before you begin using your new version.

SETTING MARKMAGIC VERSIONS:

The Work MarkMagic Version command displays current system and user version settings and is the preferred method to switch the active

version based on user and *SYSTEM. To use this command, type **MRKMAG80/WRKMMVSN** and press Enter. Note: *SECOFR authority is required to change other User and system default settings.

The Set MarkMagic Version command is an alternate method to switch the active version based on user, session, or system wide. To use this command, type **MRKMAG80/SETMMVSN** and press F4. The SETMMVSN command settings are referred to by the system for all non-qualified calls to MarkMagic. Note: *SECOFR authority is required to change other User and system default settings.

Note:

- SESSION version overrides are controlled by a data area in QTEMP and only work for interactive jobs. Any print job submitted to batch will default back to either the *SYSTEM or *USER version override.
- USER version overrides are controlled by a data area in MRKMAGUSRP. *USER overrides will not be found if a CHGJOB was issued and the user was changed or the user was changed in the SBMJOB command.

When starting MarkMagic via the STRMRKMAG command, you can override the default version. Type STRMRKMAG and press F4. Select a version and press Enter

TO REVERT TO A PREVIOUS MOD LEVEL:

The installation program does not delete your previous libraries; they are renamed and saved in SAVF format. If, after installation, you wish to revert back to your previous modification level, contact CYBRA Support for assistance in restoring the following saved libraries.

Note: During the MarkMagic 8 upgrade, programs in your older MarkMagic version (MRKMAG60 or MRKMAG70) are replaced with newer programs that allow MarkMagic 8 to run side by side with 6.1/6.5 and/or 7.2/7.7. A copy of the original MRKMAG60 or MRKMAG70 programs, depending on which version you upgraded from, are saved to a SAVF in the production library (MRKMAG60 or MRKMAG70). The name of the file is MMxxxxyyyyy where xx = production library number (60 or 70) and yyyyyy = the version 8 mod level you upgrade to (120515). These older programs can be restored to your live production library. Please contact help@cybra.com or 914-963-6600 option 4 for assistance.

3. TROUBLESHOOTING

Two MarkMagic Installation Logs are created upon completion of installation. The summary log contains MarkMagic installation comments, while the detail log also includes the full job log. The log's details are:

Spooled Filename: MARKMAGIC User data: INSTALLLOG

In addition, the detail log is written to the following database file:

Library: QGPL File: MMINSLLOG

If you have trouble installing MarkMagic 8 we request that you e-mail us the summary log immediately following your installation. If the installation is unsuccessful, there will most likely not be a printed install log. Please send the log file in QGPL to help@cybra.com

G.JMAGIC INSTALLATION

1. BEFORE YOU BEGIN

To load JMagic 8 on *any* PC running Windows NT, 2000, XP, Vista, and Windows 7.

Minimum Hardware Requirements:

Processor	1.5 GHz Intel Pentium IV, or higher
Display	SVGA, 1152x864 (recommended minimum resolution)
Memory requirements	512MB RAM
Disk space requirements	75 MB for JMagic 70 MB for Java Virtual Machine

Note: To use JMagic 8, MarkMagic version 8.1 or 8.6 must be active on the System i.

2. INSTALLATION

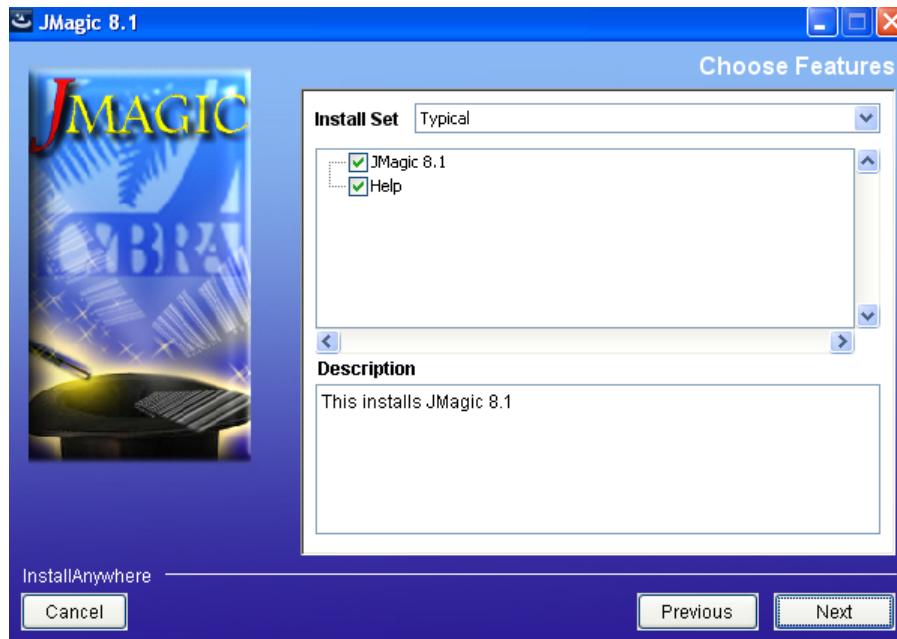
Download JMAGIC81SETUP.ZIP from our website or copy the JMAGIC81SETUP.ZIP from our installation CD and extract the enclosed file to a temporary subdirectory.

Double click the file JMagic81setup.exe to launch the JMagic InstallShield Wizard and follow the prompts. We recommend the "Typical" installation which installs both the JMagic8 application the MarkMagic8 5250 online help.

The wizard will prompt you to select an existing subdirectory, or create a default product destination subdirectory, for example: "*X*":|*Program Files*|*CYBRA Corporation*|*Jmagic81*. (Where "*X*" is your drive letter) as well as the Follow the steps to complete the installation.

Navigate to the Start menu Programs folder then CYBRA Corporation, and then click on the icon "JMagic 8.1" to start JMagic. Sign on to the System i to initiate communications with MarkMagic 8.1 or 8.6

Note: During a Typical JMagic 8.1 installation, 5250 Web Help is automatically installed to *C:*|*Program Files*|*CYBRA Corporation*|*Help* See section "H" for 5250 Web Help details.



I. 5250 WEB HELP INSTALLATION

Pressing the F1 key in your 5250 (GreenScreen) session will automatically open your default web browser with the page corresponding to your inquiry.

Note: Web Help can be installed on any PC by checking off just the Help option during the JMagic81setup.exe install.

While we highly recommend installing the 5250 Web Help into the default directory, you are able to change this if needed.

Run the MRKMAG80/SETMMPRM command, and page down once to the second screen. You will be able to change the path to the web help.

Example:

```

Set MarkMagic Parameters

Date: 4/24/12      CPU model type: S20      Version: 8.1
Time: 11:46:42    CPU serial num: 10B0724  Mod lvl: 120515
                  Processor group: P10
                  Logical partitn: 001

Type choices, press Enter.
Company name . . . . . Your Company Name name

Default menu type . . . . D          D=Design view
                              L=List view

Keep job history . . . . 100          7 - 999 (days)

Keep archived records . . : 100          7 - 999 (days)

PC path to MarkMagic Web Help . . : C:\Program Files\CYBRA Corporation\Hel
                                     p

MarkMagic JVM Subsystem   N

Print Logging On . . . . : Y

Bottom

F3-Exit  F4-Prompt  F5-Refresh  F12-Cancel

```

Altering the default path with the SETMMPRM command changes this parameter globally, so you will need to make sure the path you set in SETMMPRM matches the path on the user's pc.

MarkMagic Support :
914-963-6600 Option 4
• Fax: 716-712-0666 •
help@cybra.com



We identify with success.