



MarkMagic

Barcode Label, RFID Tag, and Smart Forms Software for IBM System i
MarkMagic Basic Concepts

Session A - [24 x 80]

File Edit View Communication Actions Window Help

Device: ZTS300

Format field 0.50

4.80
4.70
4.60
4.50
4.40
4.30
4.20
4.10
4.00
3.90
3.80
3.70
3.60
3.50
3.40

Select a Field

B Bar code
D Data field
G Graph
L Line field
T Text field
K Text
X Box field

F10=Sort by
F12=Cancel

F2=Edit
F7=Copy

MA A

1902 - Session successfully started

JMagic

Format Edit View Fields Utilities PrintTransformer Help RFID

Options

MData 1 FROM1 FROM LINE 1
MData 2 TO1 TO LINE 1
MData 3 FROM2 FROM LINE 2
MData 4 TO2 TO LINE 2
MData 5 FROM3 FROM LINE 3
MData 6 TO3 TO LINE 3
MData 7 PO# PO NUMBER
MData 8 UPC# UPC NUMBER
MData 9 CASEQTY CASEQTY
MData 10 STYLE STYLE
MData 11 COLOR COLOR
MData 12 SIZE SIZE
MData 13 SSCC SSCC #
MData 14 HEADER RFID Header
MData 15 FILTER RFID Filter
MData 16 PARTITION RFID Partition
MData 17 COMPANYPREFIX RFID Company Prefix
MData 18 ITEMREF RFID Item Reference
MData 19 SERIALNUM RFID Serial Num
MData 20 ACCESS Access Password
MData 21 KILL Kill Password
Text 1 *HEADING FROM:
Text 2 *HEADING TO:
Text 9 *HEADING Ship to Postal Code:
Text 10 *HEADING (420)79072
Text 12 *HEADING PO #:
Text 13 *HEADING UPC #:
Text 15 *HEADING CASE QTY:
Text 17 *HEADING STYLE:
Text 19 *HEADING COLOR:
Text 21 *HEADING SIZE:
Text 23 *HEADING SSCC
Text 24 *LINK

FROM: CYBRA CORP.
ONE EXECUTIVE BLVD
YONKERS, NY 10701

TO: WALMART DC#6012
3100 NORTH IH27
PLAINVIEW, TX 79072

Ship to Postal Code:
(420)79072

PO #: A10034570000004
UPC #:073854008089
CASE QTY#2

STYLE: CLEAR
COLOR: RED
SIZE: SMALL

SSCC

0054698778936150045

Type Field # Name Description

Bar code 2 *HEADING 00 546987 78936150045

Height N B Width W t N Ratio Font Row Column Length Decimals

1.0" 3 38 Code 128 Subset B 0.45" 0.35" 21

MMEXAMPLES 192.168.4.112 ZTR110X18 WMRFIDLBL Walmart To DC x, y: 1.60, 1.59

Welcome

Welcome to MarkMagic and JMagic! In this tutorial we will introduce to you the basic concepts of our software. This will be a combined tutorial showing you the methods used in both MarkMagic and JMagic to accomplish the same task. The steps are split up and in different colors so you can focus only on the *MarkMagic* or *JMagic* steps separately.

Before we begin we are assuming:

1. You have MarkMagic and JMagic installed and ready for use.
2. You have a Hewlett Packard PCL compatible Laser Printer available at your location that is configured for printing on the System i server. (If not, we can use our PDF option to produce your output.)

In this tutorial, you will learn:

1. How to start MarkMagic and JMagic.
2. How to navigate the various menus in MarkMagic and JMagic.
3. What a format is and how to define a new format.
4. What a field is and how to add new fields.
5. How to edit existing fields.
6. How to print your format using MarkMagic.

Welcome	1
Starting the Programs	3
Navigation	6
Creating a New MarkMagic Format.....	7
Designing Your Format	12
Sample	14
Field #1 – Text: “My MarkMagic Tutorial”	15
Field #2 – A Box	17
Field #3 – Text: “MarkMagic tutorial line one”	20
Field #4 – Copy/Edit: “MarkMagic tutorial line two”	23
Field #5 – Create a Line	29
Field #6 – Copy the Line	32
Field #7 – Create a Bar Code.....	34
Field #8 – Text: “Made By: <i>Your Name</i> ”	40
Printing Your Format.....	42
Congratulations.....	46

Starting the Programs

MarkMagic

At an OS/400 command line, type **STRMRKMAG** and press the F4 key to prompt the command. Leave the option for *User Library Name* as **NONE*. Make sure the option for *Printer Type* is **ALL*. Lastly, for Version, type your current MarkMagic Version (example 9.0, 8.6). and press the ENTER key. (If you do not please fill in the latest version you see in the list of possible choices.) You should now see the MarkMagic main screen.

```
MAIN                                OS/400 Main Menu                                System:  CYBRA7

Select one of the following:

    1. User tasks
    2. Office tasks
    3. General system tasks
    4. Files, libraries, and folders
    5. Programming
    6. Communications
    7. Define or change the system
    8. Problem handling
    9. Display a menu
   10. Information Assistant options
   11. iSeries Access tasks

   90. Sign off

Selection or command==> STRMRKMAG_

F3=Exit  F4=Prompt  F9=Retrieve  F12=Cancel  F13=Information Assistant
F23=Set initial menu
```

```
Start MarkMagic application (STRMRKMAG)

Type choices, press Enter.

User library name . . . . . *NONE      Name, *NONE, F4 for list
Printer type . . . . . *ALL          Name, *ALL, F4 for list
Version . . . . . 7.1              *DEFAULT, 7.1, 6.1, 5.1

Bottom

F3=Exit   F4=Prompt   F5=Refresh   F10=Additional parameters   F12=Cancel
F13=How to use this display   F24=More keys
```

```
Version . . . : 7.1          MarkMagic          Mod lvl . . . : 091229

Format          Print          Utilities

User library . . . : MRKMAGDTA

M a r k M a g i c 7

Enterprise
Edition

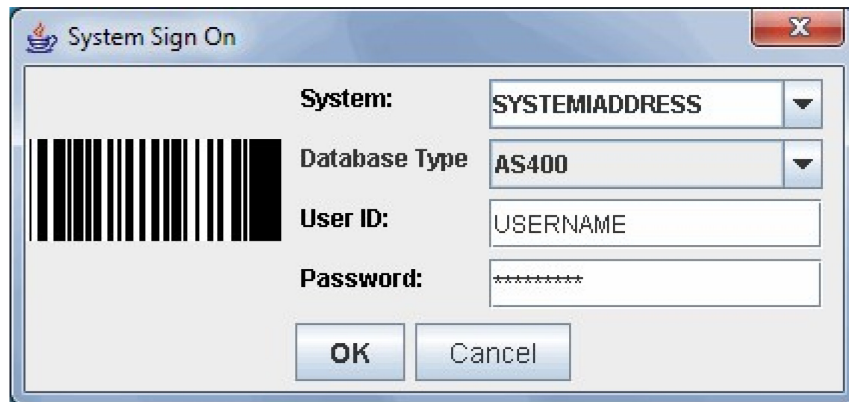
F3=Exit   F4=Prompt   F9=Cmd line   F10=List View
(c) Copyright CYBRA Corp. 1991, 2009
```

JMagic

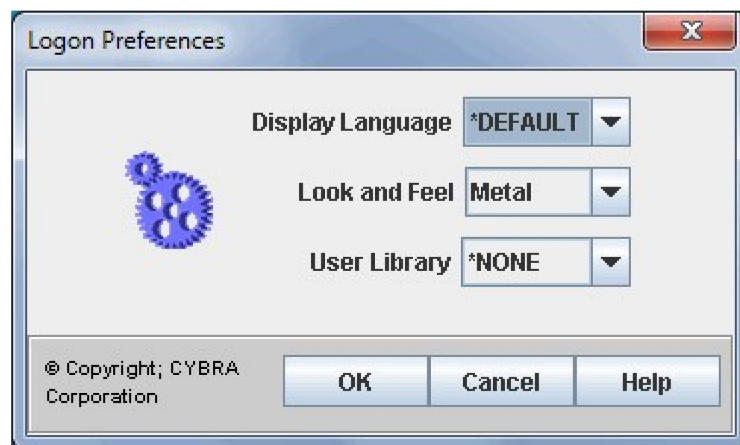
On your windows taskbar, click *Start*, then *All Programs* or just *Programs* (older versions of Windows).

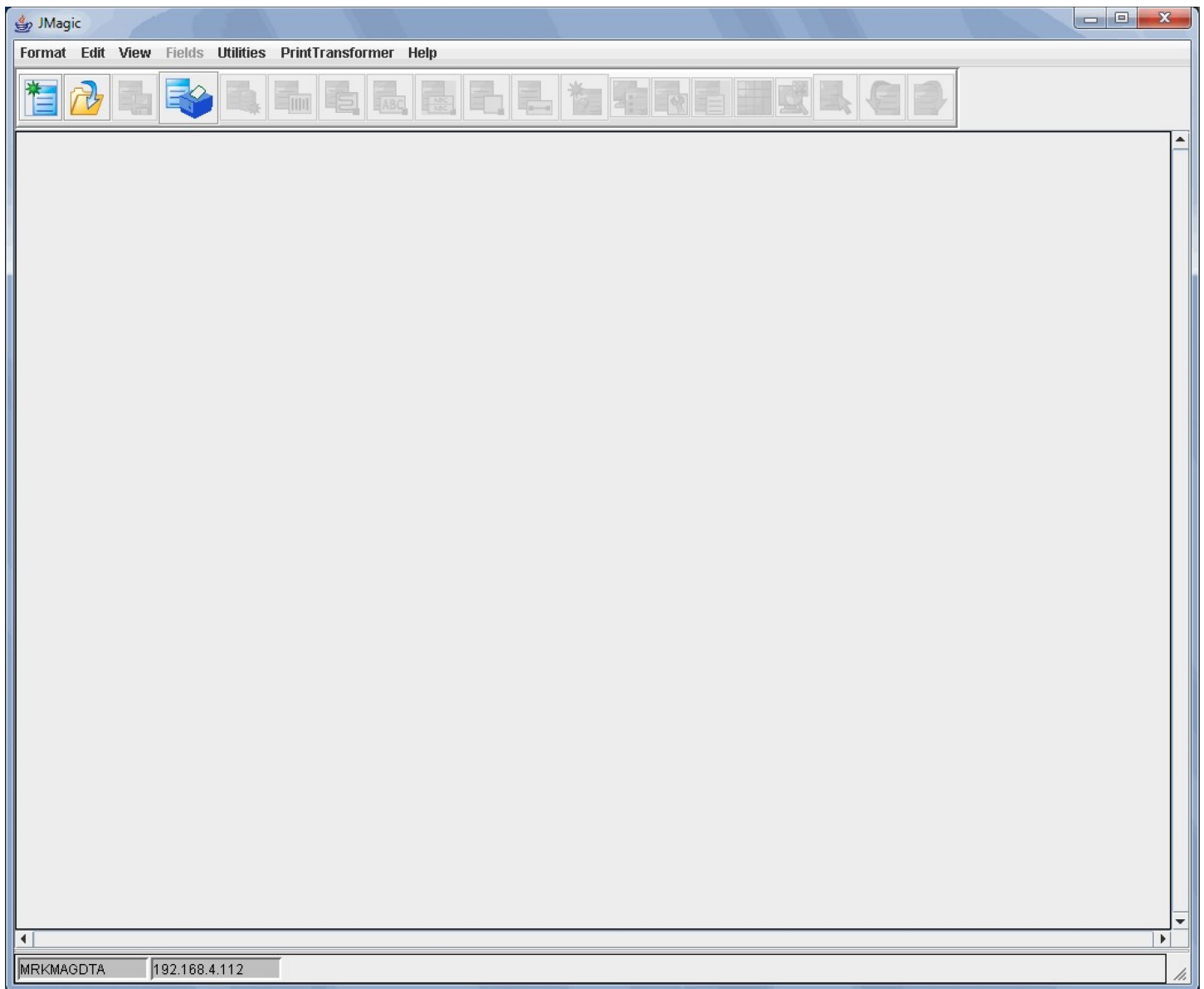
Tutorial 1: MarkMagic Basic Concepts, Pg. 4

Choose CYBRA Corporation and then click the *JMagic* icon. You will be asked to log on to your System i server. Type the IP address or domain name of your System i server along with your user name and password. Also, make sure Database Type is set to AS400.



After logging on, JMagic will ask you for your logon preferences, for the purposes of this tutorial please leave the default values. Press OK to continue. JMagic is now started.





Navigation

MarkMagic

Navigating the menus in MarkMagic is very simple. MarkMagic's main menu is located at the top of the screen in white. The letter in uppercase on the menu and any submenu option is the key to press to access that option. For example, to check your setup, you can press "U" (Utilities) then "S" (Setup). F12 will back out of most MarkMagic windows and menus if you are lost. You may also use the arrow keys to move the cursor around and press enter on the menus and options you wish to select.

JMagic

Navigate using your mouse in JMagic just like any other windows application. This is what makes Jmagic so easy to use.

Creating a New MarkMagic Format

Making a format is the first step in creating labels and forms in MarkMagic and JMagic. Formats define information such as the type of printer, the size of your label or form, placement of text, lines, boxes, graphics, and the type and size of barcodes to be used.

MarkMagic

At the MarkMagic main menu press “F” (Format) and then “N” (New). The *Create a Format* dialog window is displayed. For this tutorial, we are going to be designing a label for the HP laser printer so we must tell MarkMagic what device to use. Type **HPPCL5** in the *Device* field. HPPCL5 is one of MarkMagic’s standard laser printer drivers. Tab down to the *Format Name* field, and name your format **LEARNXXX** (replace **XXX** with your initials), then press ENTER.



The *Work with Format Definition* screen will be displayed. Enter a description for the new format (for example, ‘Tutorial Format’), then tab down to the *Unit of Measure* field. Type **IN** for inches as the unit of measure.

In this tutorial we will create a format that takes up the whole 8.5”x11” sheet of paper. Type **11** for the length and **8.5** for the width. Use these same values for the Forms length and width, too. Set the top and side margins to 0. Everything else can be left with the default values. Press ENTER and ENTER again to accept. The MarkMagic *Design a Format* screen is displayed.

Work with Format Definition

Device : HPPCL5
Format : LEARNXXX

Type choices, press Enter.

Description	<u>Description of your format</u>	
Unit of measure	<u>IN</u>	IN=Inches, MM=Millimeters
Length	<u>11.00</u>	.50 - 14.00
Width	<u>8.50</u>	.50 - 14.50
Forms length	<u>11.00</u>	.50 - 14.00
Forms width	<u>8.50</u>	.25 - 14.50
Measure from	<u>B</u>	T=Top, B=Bottom
Top margin	<u>0</u>	.00 - 9.00
Side margin	<u>0</u>	.00 - 7.00
Rotation	<u>0</u>	0, 90, 180, 270

More...

F3=Exit F4=Prompt F5=Refresh F12=Cancel

Device: HPPCL5 Design a Format Format: LEARNXXX

Format	fields	Options	Print	Utilities
	0.50	1.00	1.50	2.00 2.50 3.00 3.50
11.00+.....!.....+.....+.....!.....+.....+.....!.....+.....+.....!			
10.90	<div style="background-color: red; width: 100%; height: 100%;"></div>			
10.80				
10.70				
10.60				
10.50				
10.40				
10.30				
10.20				
10.10				
10.00				
9.90				
9.80				
9.70				
9.60				

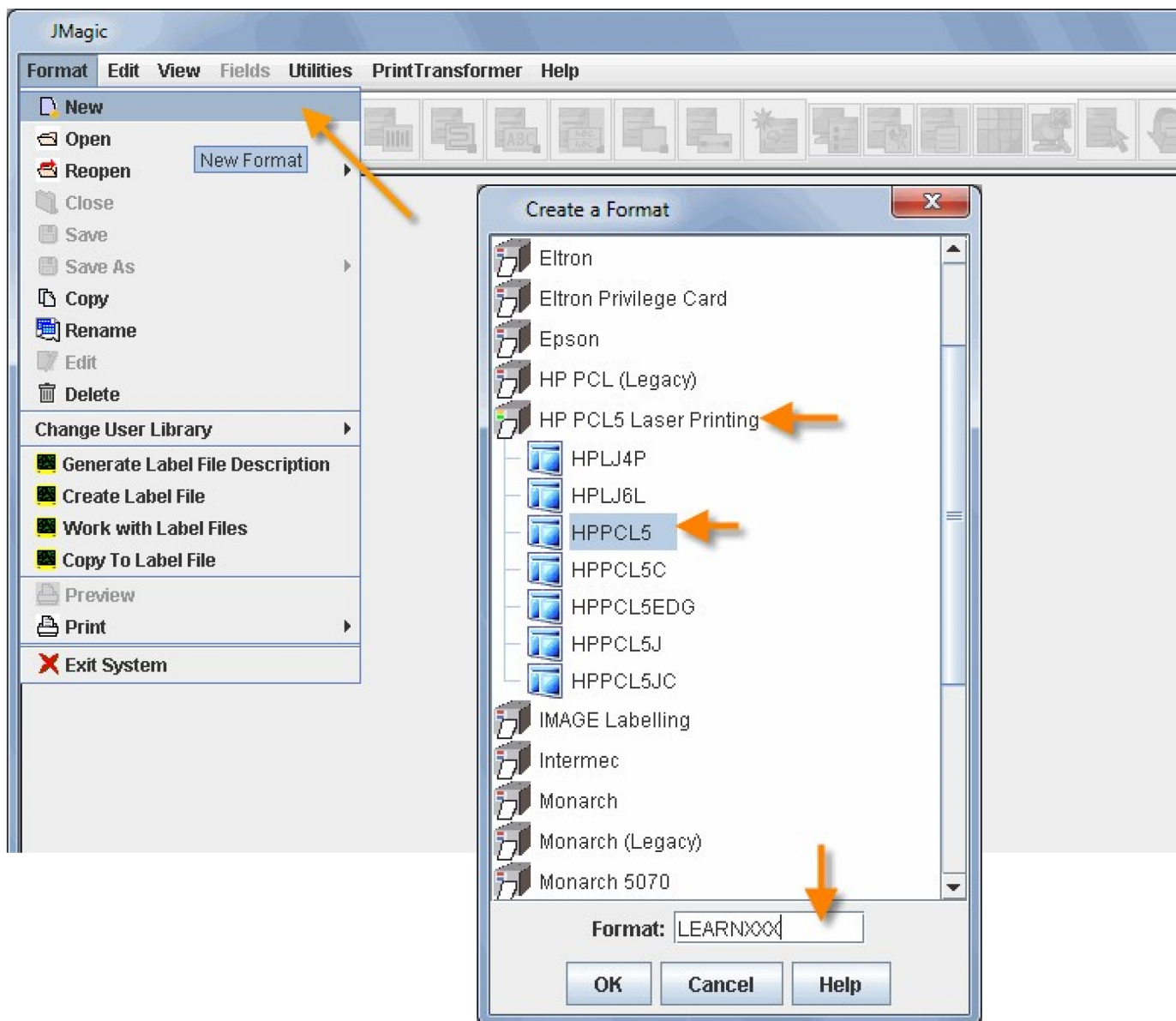
F2=Edit F3=Exit F4=Revert F5=Undo F6=Create
F7=Copy F8=Delete F11=Move F12=Cancel F24=More keys

(c) Copyright CYBRA Corp. 1991, 2005

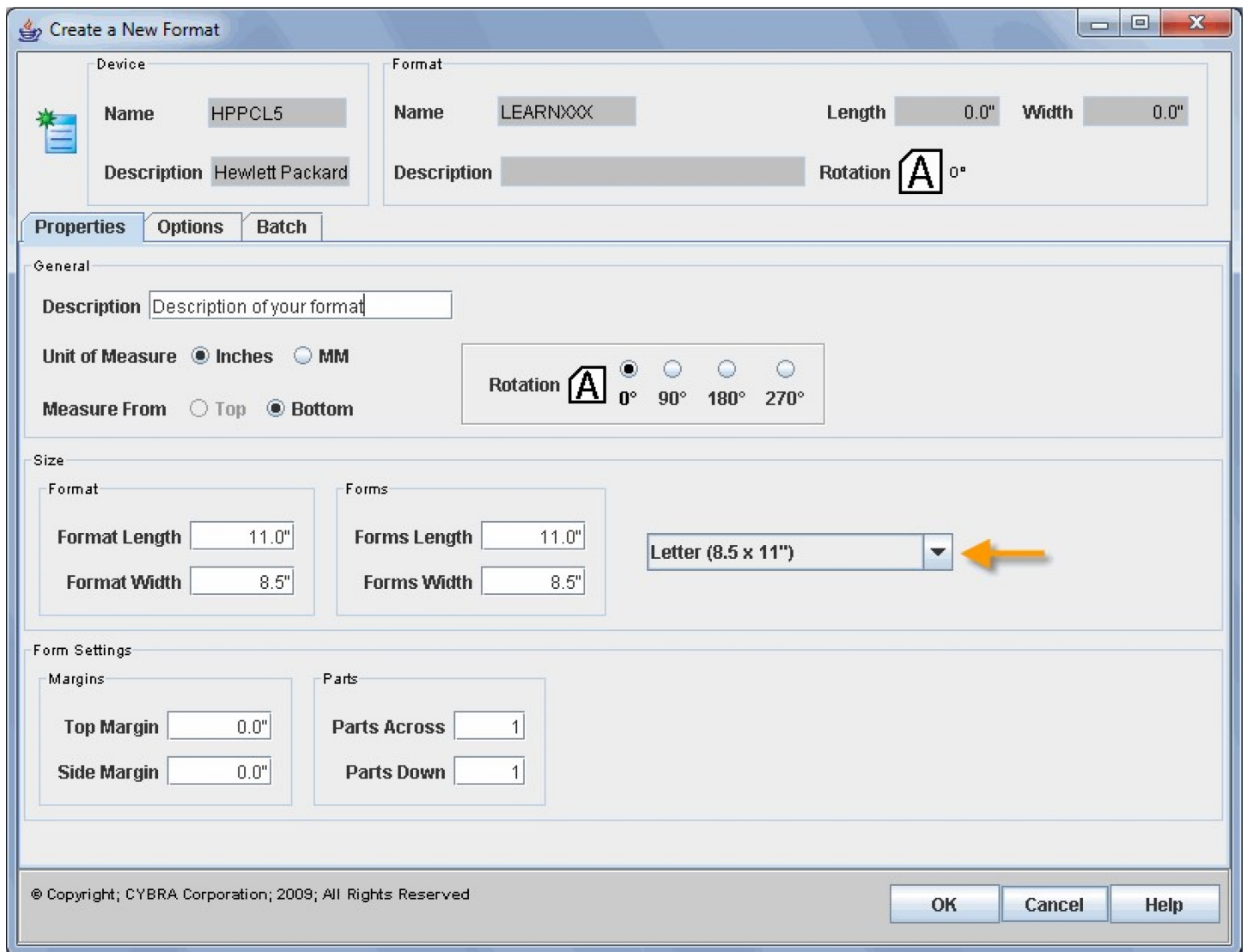
Notice the coordinates to the left and top of the screen. These values represent actual distances on the final printed page. Use these values to guide you when adding new fields to your format. They will give you a general idea of where your field will be located when your form prints.

JMagic

Using your mouse, at the top, click *Format* then click *New*.



You are provided with a list of device types by category. First, choose HP PCL5 Laser Printing. Then choose HPPCL5. Place your cursor in the *Format* field and name your new format **LEARNXXX** (replace **XXX** with your initials). Press OK to proceed to the *Create a New Format* window.



Create a New Format

Device
 Name: HPPCL5
 Description: Hewlett Packard

Format
 Name: LEARNXXX
 Length: 0.0" Width: 0.0"
 Description:
 Rotation: A 0°

Properties | **Options** | **Batch**

General
 Description: Description of your format
 Unit of Measure: ☒ Inches ☐ MM
 Measure From: ☐ Top ☒ Bottom
 Rotation: A ☒ 0° ☐ 90° ☐ 180° ☐ 270°

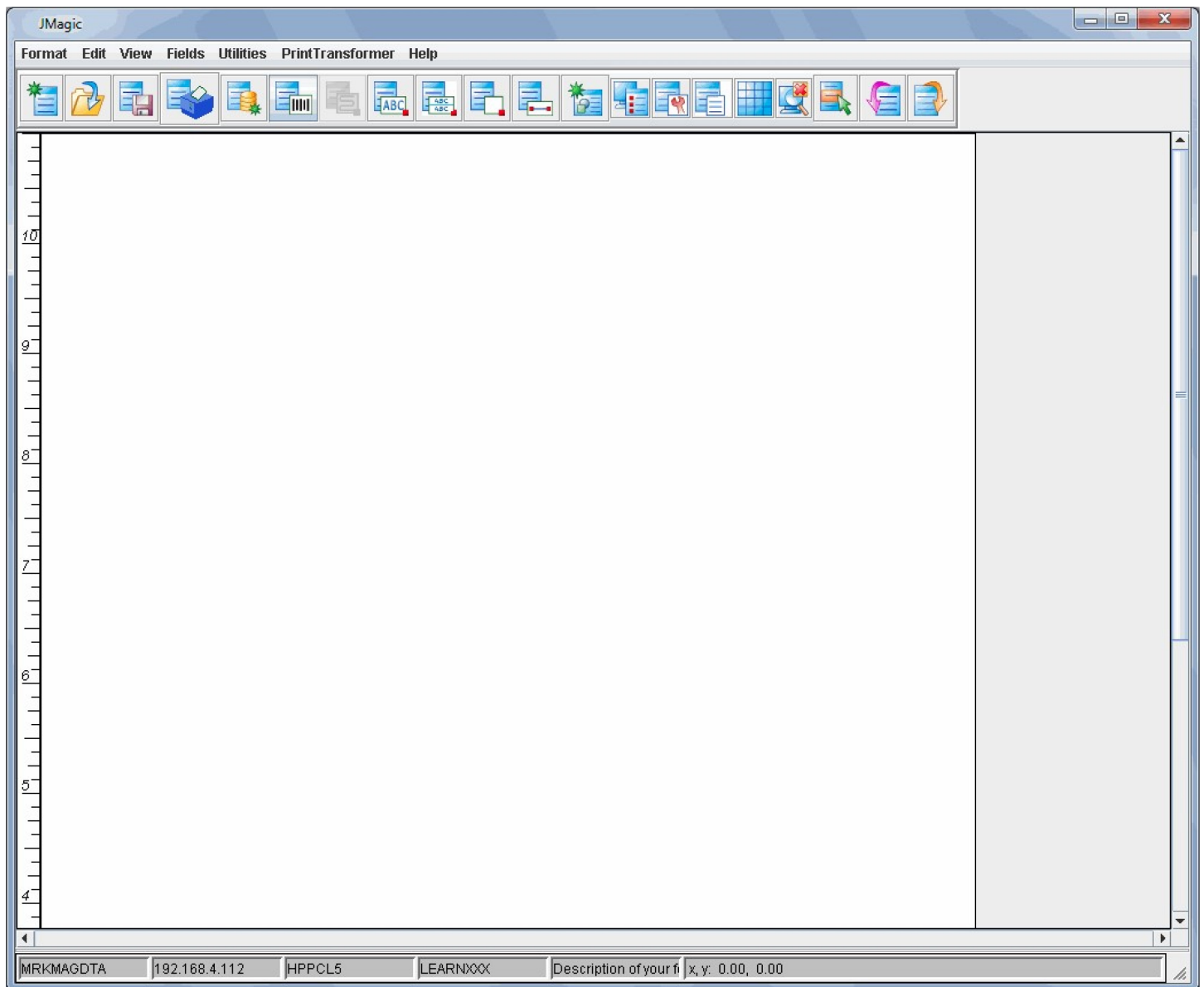
Size
 Format Length: 11.0" Format Width: 8.5"
 Forms Length: 11.0" Forms Width: 8.5"
 Letter (8.5 x 11")

Form Settings
 Margins: Top Margin: 0.0" Side Margin: 0.0"
 Parts: Parts Across: 1 Parts Down: 1

© Copyright; CYBRA Corporation; 2009; All Rights Reserved

OK Cancel Help

Make sure the *Unit of Measure* is inches and provide a description for your format. On the right, choose “Letter” from the pull down menu to automatically set the page size to 8.5” width and 11” length. Leave everything else with the default values and click **OK**. The format will be created and you will be brought to the JMagic main design screen. The white area is your format design “canvas.”



Notice the coordinates to the left and bottom of the screen. These values represent actual distances on the final printed page. Use these values to guide you when adding new fields to your format. They will give you a general idea of where your field will be located when your form prints.

Designing Your Format

We will be designing the format as seen on the following page. All it takes is 8 easy steps. Each step is numbered so you can locate the explanation for it in the tutorial. For simplicity, we are going to use *HEADING fields where appropriate. (*HEADING fields are Data and text that do not change from page to page or record to record.) Dynamic data retrieved from spool files and database records will be introduced in a later tutorial.

NOTE: Once in the MarkMagic design screen, you may not be able to view your entire format on the screen. You can scroll the format up and down with the PageUp and PageDown keys. You can scroll the format left and right using F19

(Shift+F7) and F20 (Shift+F8).

NOTE: When adding fields, MarkMagic provides coordinate, length and height values, etc. based off where you had your cursor on the screen at the time. We will override these values in most of the steps in this tutorial to ensure that lines, text fields, etc. are placed exactly where we want. JMagic takes it one step further and provides a “WYSIWYG” (What you see is what you get.) view. This lets you see what the format will look like before you print it.

PRINTING NOTE: If you wish to print the format before you’ve completed the tutorial, you can press F21 (Shift+F9) to execute the MarkMagic PRTLBLF (Print a Label File) command at any time. Fields are automatically saved in MarkMagic as they are added. When adding fields with JMagic, you must save the format each time you wish to print it. If you try to print the fields without saving the format, the printed page will not have the most recent changes made to your format. If you exit JMagic without saving the format, you will lose all unsaved changes.

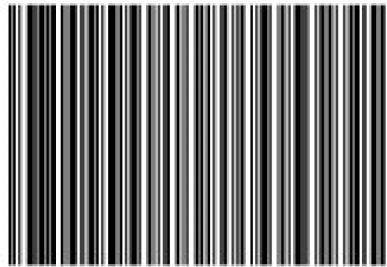
1 My MarkMagic Tutorial

2

3 MarkMagic tutorial line one.

4 MarkMagic tutorial line two.

5



7

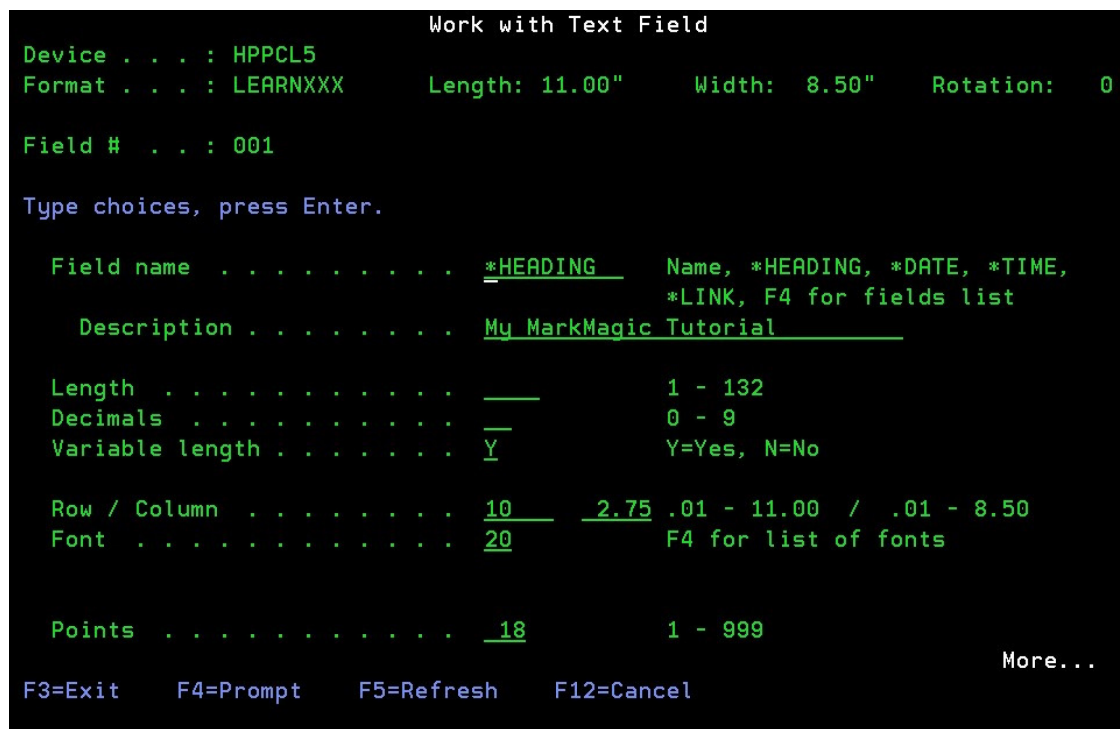
6

8 Made by: Your Name

Field #1 – Text: “My MarkMagic Tutorial”

MarkMagic

Place the cursor on green design screen in the general area where the “M” in “My” would begin. Don’t worry about getting the placement exact, we can do that in the next screen.) Press **F6** to bring up the *Select a Field Type* menu. Press **T** for *Text*. You are now on the *Work With Text Field* screen.

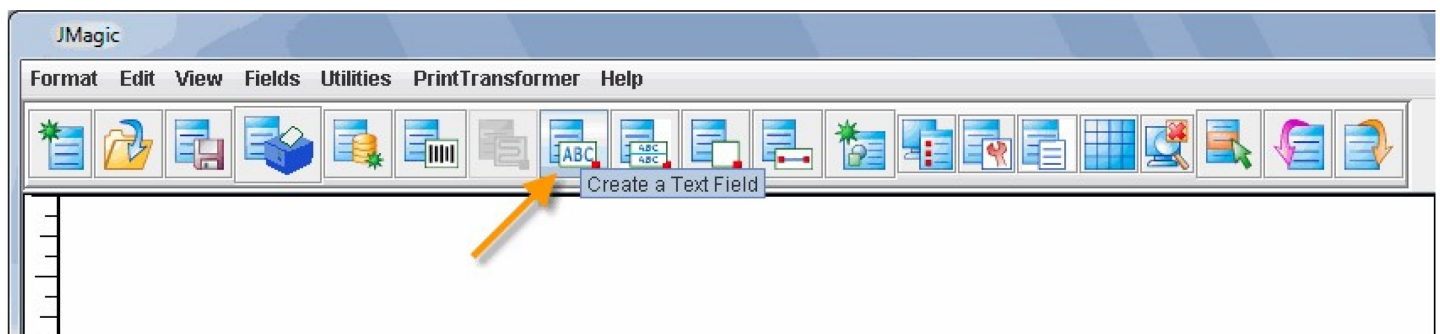


Leave **HEADING* as the *Field Name*. This means whatever is typed in the *Description* field below will be printed on the document. Type **My MarkMagic Tutorial** in the *Description* field. Change *Row/Column* to 10 and 2.75 respectively. (Field will be placed 10 inches from the bottom and 2.75 inches from the left edge.) Leave the *Font* as number 20. And change the *Points* to 18. Press ENTER and then ENTER again to confirm. You should now see an area on the design screen showing you where your text is placed.



JMagic

Click the “Create a Text Field” button at the top. Your mouse cursor now becomes a + to indicate that it wants you to click somewhere in the workspace. Click once towards the top of the canvas where the text should be placed. The “Create a New Text Field” window pops up.



Create A New Text Field

Device
 Name: HPPCL5
 Description: .5 & Compatible

Format
 Name: LEARNXXX
 Length: 11.0" Width: 8.5"
 Description: Description of your format
 Rotation: A 0°

Properties | **Font** | **Display**

Name and Description
 Field Name: *HEADING [Browse...] Field #: 1
 Description: My MarkMagic Tutorial

Positioning Properties
 Row: 10.0" Column: 2.75"

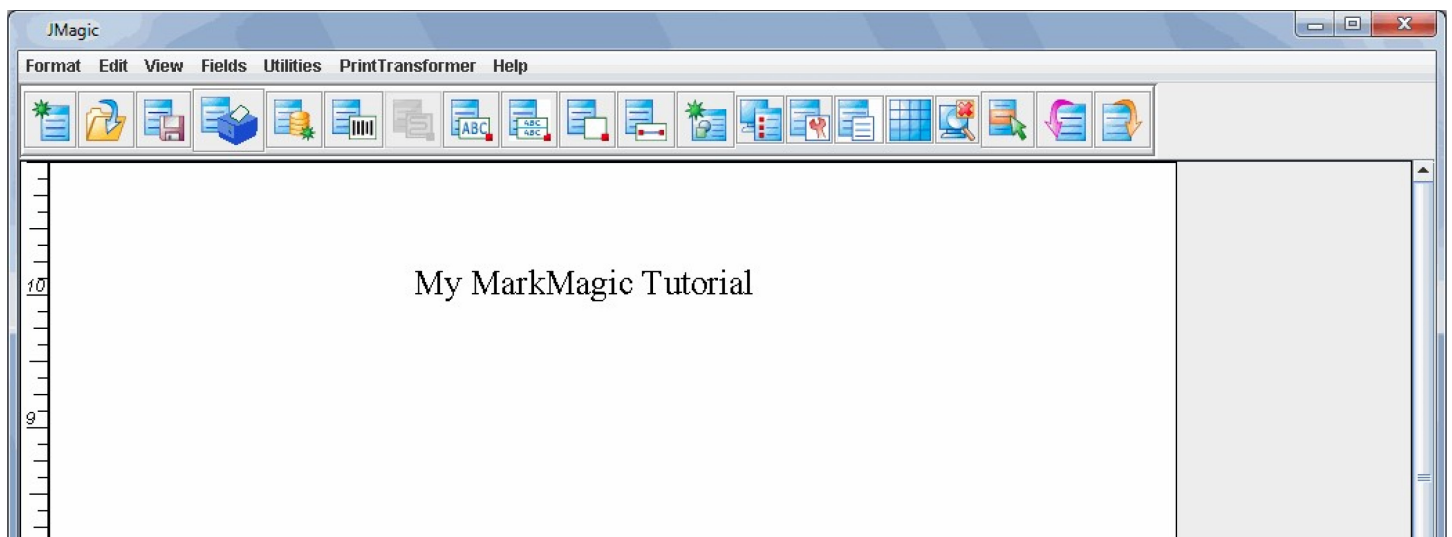
Attributes
 Length: 22
 Decimals:
 Variable Length: ☒ Yes ☐ No

Font
 Font: 20 Times
 Point: 18

© Copyright; CYBRA Corporation; 2009; All Rights Reserved

OK Cancel Help

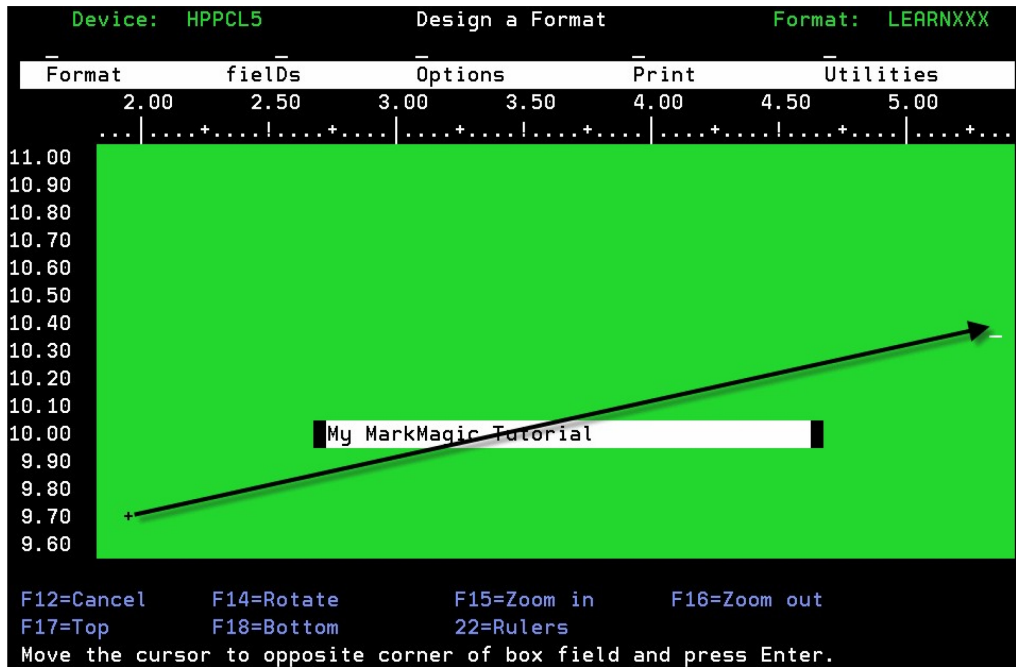
Leave *HEADING as the *Field Name*. This means whatever is typed in the *Description* field below will be printed on the document. Type **My MarkMagic Tutorial** in the *Description* field. Change *Row* and *Column* to 10 and 2.75 respectively. Leave the *Font* as number 20. And change the *Points* to 18. Press OK to create the text field. You should now see your text on the JMagic workspace, properly formatted and placed.



Field #2 – A Box

MarkMagic-

To create a box, you must specify a start corner and an end corner. However, in the MarkMagic design view, the text is not shown actual size and drawing a box around just the white text area does not necessarily mean you are completely surrounding your text with the box. With that in mind, we must override the start and end corners with custom values within the *Work With Box Field* screen. Place the cursor below and to the left of the text you just created. Press **F6** then **X** for box. Now, move the cursor to the opposite corner (top right of the text field) and press ENTER. The *Work With Box Field* screen is now shown.



Type **Box1** as the *Field Name*. You may leave *Description* blank. Set the *Start Row/Column* to **9.7** and **2.0** set the *End Row/Column* to **10.5** and **6.0**. Press ENTER and then ENTER again to accept. You should now see a box on your design screen surrounding the text we made earlier.

```

Work with Box Field

Device . . . : HPPCL5
Format . . . : LEARNXXX      Length: 11.00"      Width:  8.50"      Rotation:  0

Field # . . . : 001

Type choices, press Enter.

Field name . . . . . BOX1      Name
Description . . . . .
Start Row / Column . . . . . 9.70  2.00 .01 - 11.00 / .01 - 8.50
End Row / Column . . . . . 10.50  6.00 .01 - 11.00 / .01 - 8.50

Thickness . . . . . 1          1 - 99

Style . . . . . N              F4 for list

F3=Exit   F4=Prompt   F5=Refresh   F12=Cancel

```

```

Device: HPPCL5      Design a Format      Format: LEARNXXX

Format   fields   Options   Print   Utilities
2.00    2.50    3.00    3.50    4.00    4.50    5.00
...|...+...!...+...|...+...!...+...|...+...!...+...|...+...

11.00
10.90
10.80
10.70
10.60
10.50 -BOX1
10.40
10.30
10.20
10.10
10.00 My MarkMagic Tutorial
9.90
9.80
9.70
9.60

F2=Edit   F3=Exit   F4=Revert   F5=Undo   F6=Create
F7=Copy   F8=Delete  F11=Move  F12=Cancel F24=More keys

```

JMagic

Creating boxes in JMagic, because it gives you a “WYSIWYG” view, is very simple. Click on the “Create a Box Field” button at the top. Move your + cursor to an area that is to the bottom left of the text. Click and hold your mouse button and drag the box (you’ll see it being created) to the opposite corner of the text and let go of the button. The box is created.

MarkMagic

Place the cursor on green design screen in the general area where the beginning of the text should be. Press **F6** and then **T** for text. Type **MarkMagic tutorial line one.** in the *Description* field. Change the *Row/Column* to 9 and 3 respectively. This time, place the cursor in the *Font* field and press **F4** to prompt it. Choose a new font by paging up or down and pressing ENTER on the one you want. Font 36 (Arial) is used in this example. Set the *Points* to 12 and press ENTER twice to create your text field. You should see your new text field on the design screen.

Work with Text Field

Device . . . : HPPCL5
Format . . . : LEARNXXX Length: 11.00" Width: 8.50" Rotation: 0

Field # . . . : 002

Type choices, press Enter.

Field name	*H
Description	Ma
Length	—
Decimals	—
Variable length	Y
Row / Column	9
Font	20
Points	1

Select a Text Font

31 Univers
32 Antique
33 Garamond
34 Albertus
35 Marigold
36 Arial ←

More...

F10=Sort by descr F12=Cancel

F3=Exit F4=Prompt F5=Refresh F12=Cancel

Work with Text Field

Device . . . : HPPCL5
Format . . . : LEARNXXX Length: 11.00" Width: 8.50" Rotation: 0

Field # . . . : 002

Type choices, press Enter.

Field name	*HEADING	Name, *HEADING, *DATE, *TIME, *LINK, F4 for fields list
Description	MarkMagic tutorial line one.	
Length	—	1 - 132
Decimals	—	0 - 9
Variable length	Y	Y=Yes, N=No
Row / Column	9.00 3.00	.01 - 11.00 / .01 - 8.50
Font	36	F4 for list of fonts
Points	12	1 - 999

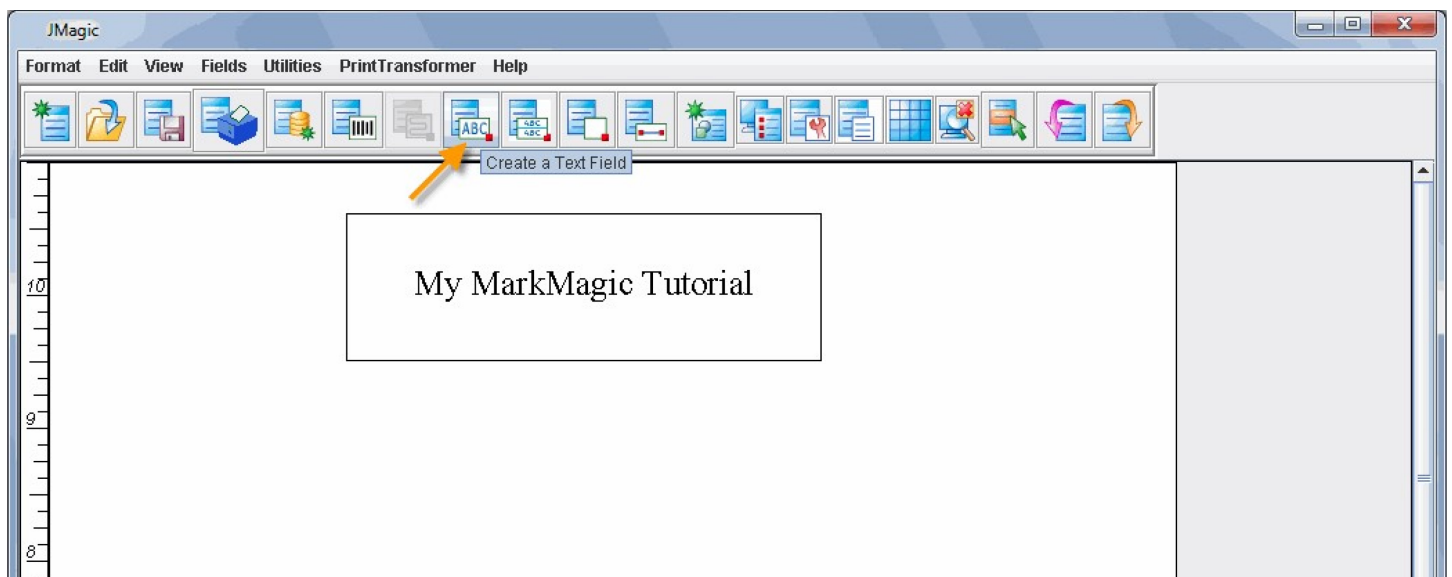
More...

F3=Exit F4=Prompt F5=Refresh F12=Cancel



JMagic

Click on the *Create a Text Field* button at the top of the window. Click on the design area in the approximate location of the start of the text line. The *Create a New Text Field* window appears.



Type **MarkMagic tutorial line one.** in the *Description* field. Change the *Row* to 9 and the *Column* to 3. Next, for the font, click the down arrow to reveal the drop down menu and choose Arial. The rest of the fields can be

left with the default values. Press OK. You should see your new text field on the design screen with the proper formatting.

Create A New Text Field

Device
Name: HPPCL5
Description: .5 & Compatible

Format
Name: LEARNXXX
Length: 11.0" Width: 8.5"
Description: Description of your format
Rotation: A 0°

Properties | **Font** | **Display**

Name and Description
Field Name: "HEADING" [Browse...] Field #: 2
Description: MarkMagic tutorial line one.

Positioning Properties
Row: 9.0" Column: 3.0"

Attributes
Length: 28
Decimals:
Variable Length: ☒ Yes ☐ No

Font
Font: 20 Times
Point: 31 Univers, 32 Antique, 33 Garamond, 34 Albertus, 35 Marigold, 36 Arial, 38 Gothic, 39 Line Printer

© Copy... NI Rights Reserved

OK Cancel Help

JMagic

Format Edit View Fields Utilities PrintTransformer Help

My MarkMagic Tutorial

MarkMagic tutorial line one.

Field #4 – Copy/Edit: “MarkMagic tutorial line two”

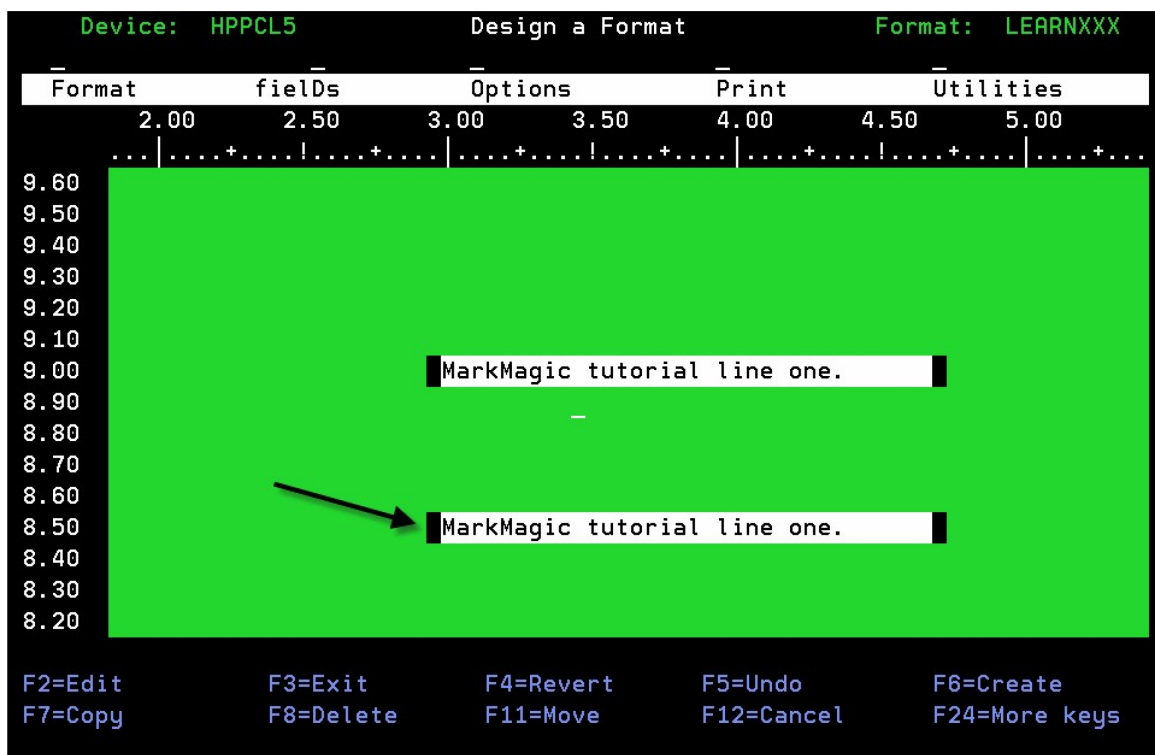
MarkMagic

Place your cursor within the white area of your previously created text field. Press **F7** on your keyboard for *Copy*. You could have also use the Copy command in the menu above. (Press **TAB** to get to the top, then **D** for fields, then **C** for copy.) MarkMagic will ask you where you want the newly copied field to be. Move your cursor down a few lines and press **ENTER**. The *Copy a Field* window appears.



```
Copy a Field
:
: Number of copies . . . . 1 1 - 99
: Vertical offset . . . . 50-
: Horizontal offset . . . . 0
:
: F5=Refresh F12=Cancel
```

This is where you specify the number of copies and the offset distance from the one before it. Set *Number of Copies* to **1**, *Vertical Offset* to **50-** (This value is in hundredths of an inch and is negative so this means down one half inch.) and set the *Horizontal Offset* to **0** (we want to keep the copied field aligned on the same column as the source field.) Press **ENTER** and you will see a duplicate text field created directly below your original text field. We want to make this field look a little different than the last, so we must edit it.



```
Device: HPPCL5      Design a Format      Format: LEARNXXX
Format  fields  Options  Print  Utilities
2.00    2.50    3.00    3.50    4.00    4.50    5.00
...|...+...!...+...|...+...!...+...|...+...!...+...|...+...
9.60
9.50
9.40
9.30
9.20
9.10
9.00  MarkMagic tutorial line one.
8.90
8.80
8.70
8.60
8.50  MarkMagic tutorial line one.
8.40
8.30
8.20
F2=Edit  F3=Exit  F4=Revert  F5=Undo  F6=Create
F7=Copy  F8=Delete  F11=Move  F12=Cancel  F24=More keys
```

Place your cursor in the white space of your new text field and press **F2** to Edit. The *Work With Text Field*

screen appears. Change the “one” to a “two” in the *Description* field. Prompt (F4) the *Font* field and select 33 (Garamond). Also, change the *Points* to 18. Press ENTER twice to accept your changes.

```

Work with Text Field

Device . . . : HPPCL5
Format . . . : LEARNXXX      Length: 11.00"      Width:  8.50"      Rotation:  0

Field # . . . : 003

Type choices, press Enter.

Field name . . . . . *HEADING      Name, *HEADING, *DATE, *TIME,
                                   *LINK, F4 for fields list
Description . . . . . MarkMagic tutorial line two.
Length . . . . . 28                1 - 132
Decimals . . . . .                0 - 9
Variable length . . . . . N        Y=Yes, N=No

Row / Column . . . . . 8.50  3.00 .01 - 11.00 / .01 - 8.50
Font . . . . . 33                F4 for list of fonts

Points . . . . . 18                1 - 999

F3=Exit   F4=Prompt   F5=Refresh   F12=Cancel
More...

```

```

Device: HPPCL5      Design a Format      Format: LEARNXXX

Format  fields  Options  Print  Utilities
  2.00   2.50   3.00   3.50   4.00   4.50   5.00
...|...+...!...+...|...+...!...+...|...+...!...+...|...+...

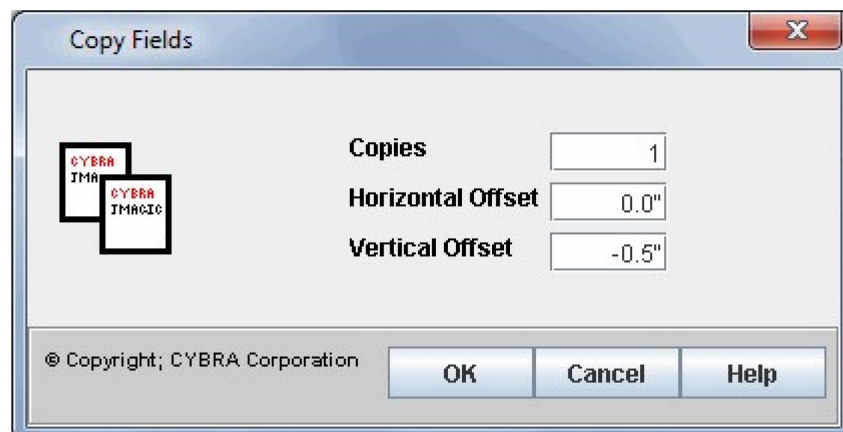
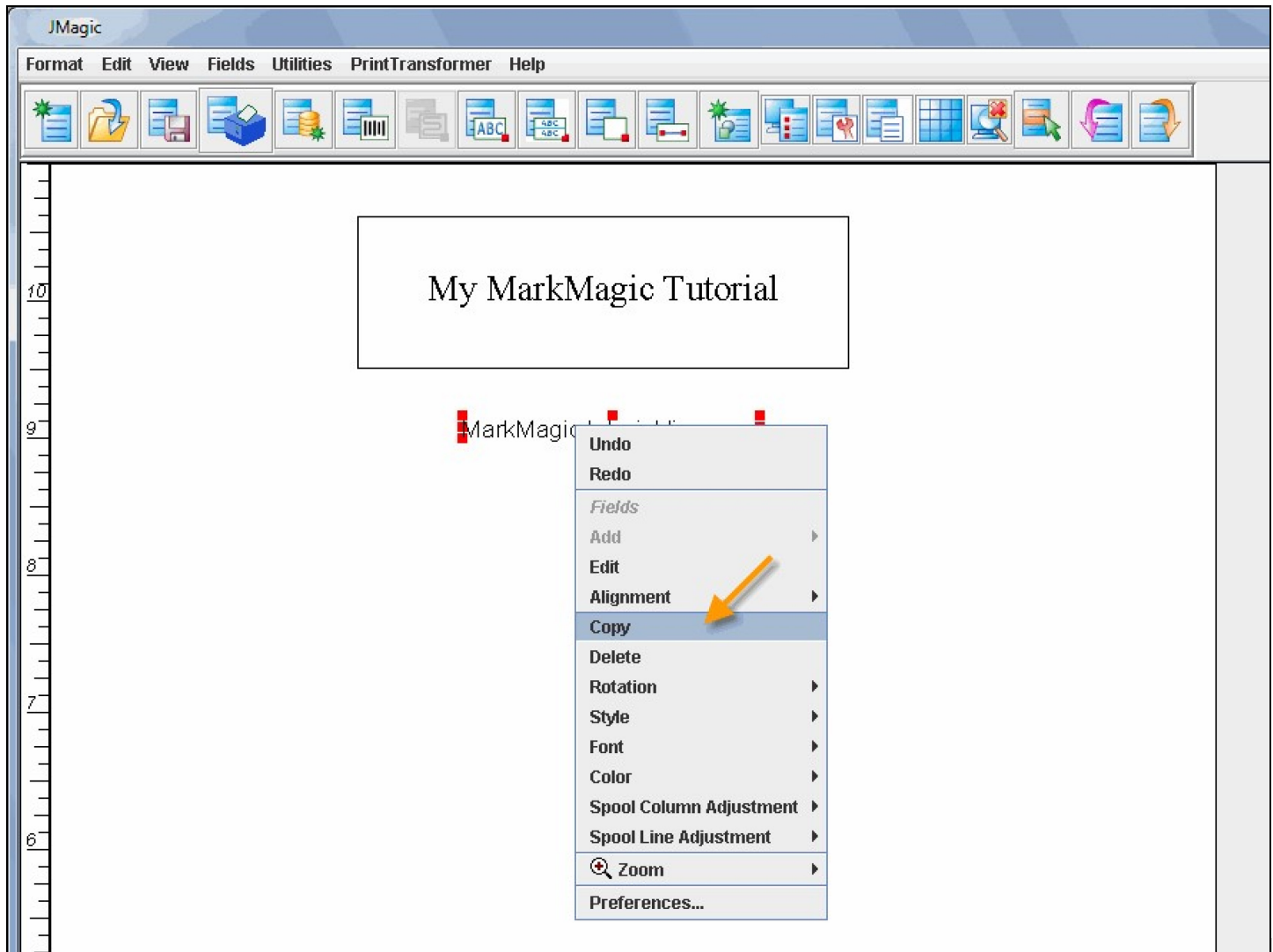
9.60
9.50
9.40
9.30
9.20
9.10
9.00  MarkMagic tutorial line one.
8.90
8.80
8.70
8.60
8.50  MarkMagic tutorial line two.
8.40
8.30
8.20

F2=Edit   F3=Exit   F4=Revert   F5=Undo   F6=Create
F7=Copy   F8=Delete   F11=Move   F12=Cancel  F24=More keys

```

JMagic

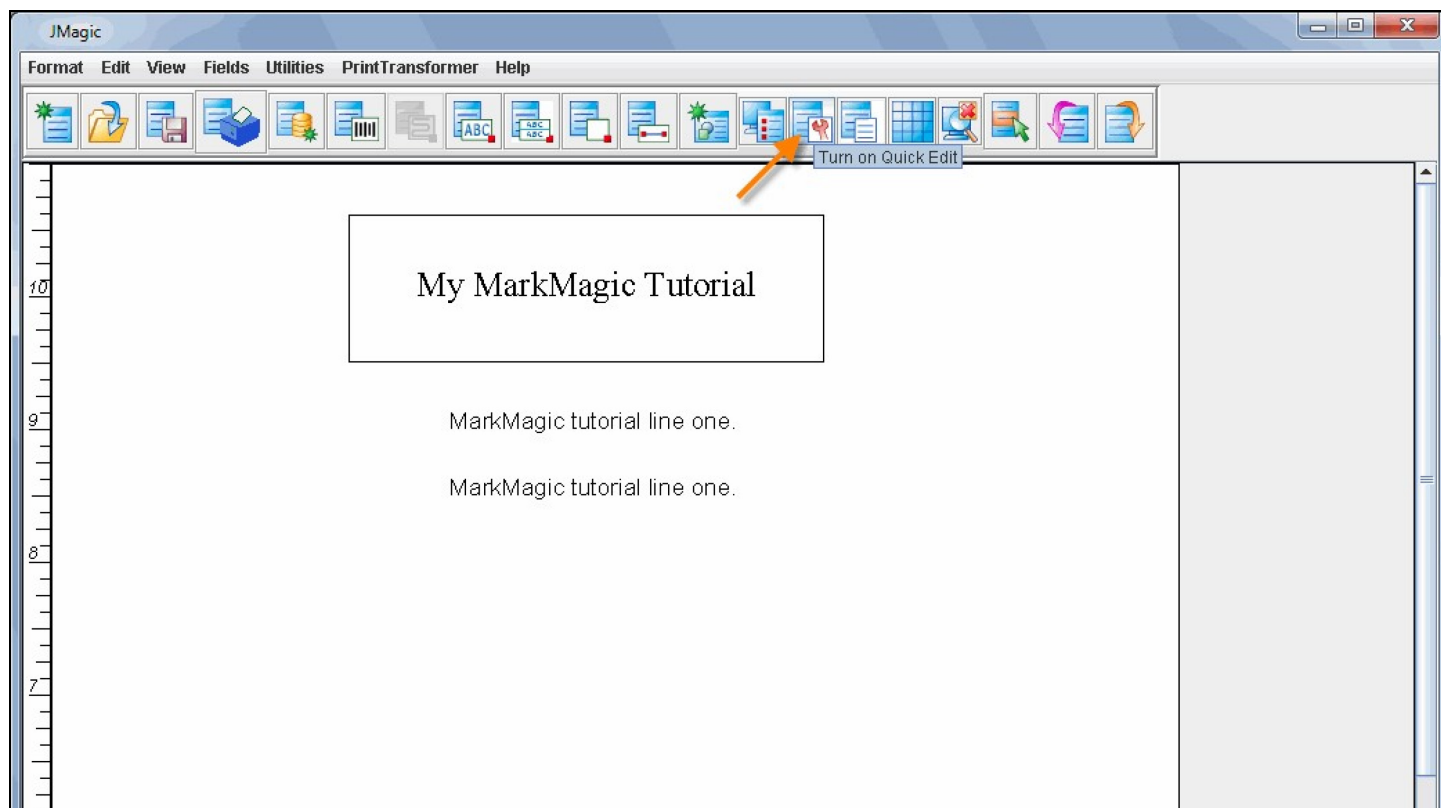
Right click once on the previously created text field to access the new right click menu. This menu has been updated in JMagic to make editing your fields much easier. You now have quick access to font, style, color, copy, and many other useful parameters. Choose *Copy* from the menu. Your cursor becomes a + indicating it wants you to click somewhere on the canvas. Click about one half inch below your first text line. You are telling JMagic where you want the new field to be. The *Copy Fields* window appears.



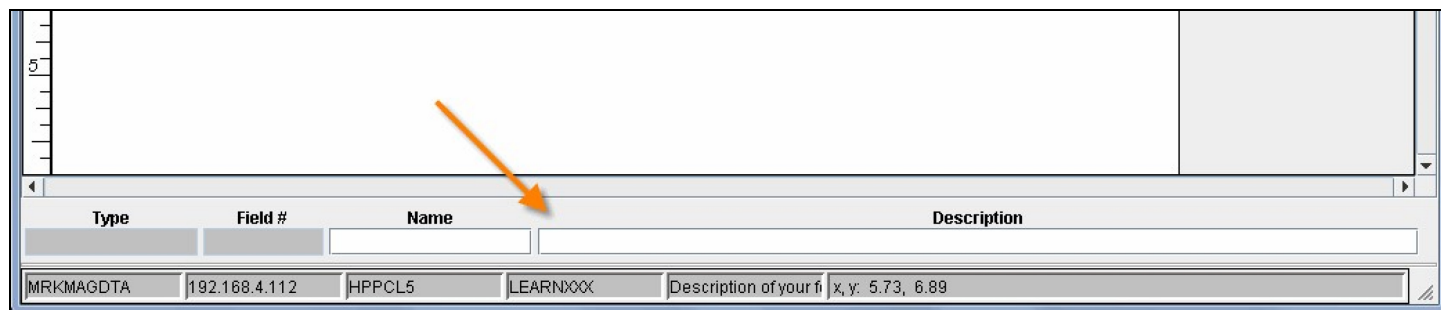
Set *Copies* to **1**, *Horizontal Offset* to **0** and *Vertical offset* to **-.5** (Down one half inch.) Press OK. You will see a duplicate text field created one half inch below your first text line.

We need to change the wording of this field as well as change the font and point size. Sure, we can use the new right click menu to change the font and style etc., but we cannot change the field description text and point size using the right click menu. To make these changes, we *could* double click the field and access the *Edit A Text Field* window, but there is an even easier way

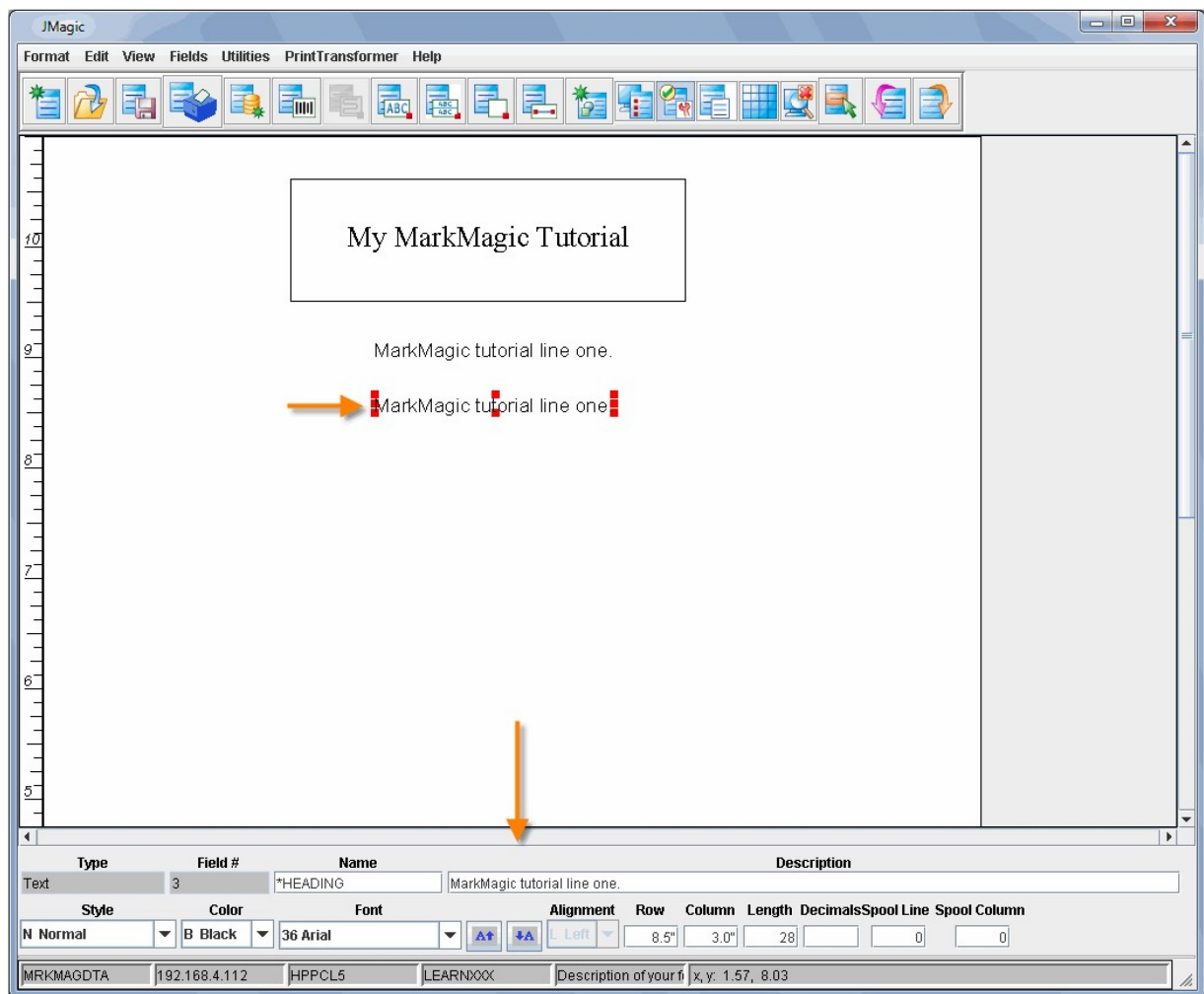
At the top, turn on the “Quick Edit Panel” by clicking the wrench icon:



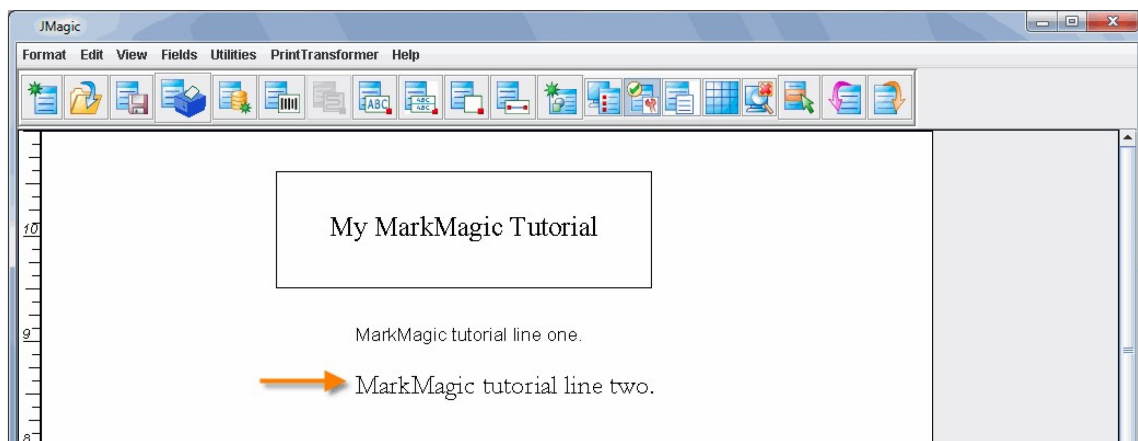
You should now see a new panel opened up at the bottom of the screen:



With this panel open, when you click on a field on the JMagic canvas, many of the fields' parameters are easily accessible for editing without the need to double click the field to open its own "Edit a Field" window.



Using the Quick Edit panel, change the description of the text field to read: **MarkMagic tutorial line two.** Also, if you did not already use the right click menu to change the font, use the menu here to change the *Font* to **Garamond**. You can also use the two buttons next to the *Font* to raise or lower the point size in single digit increments. Try raising the point size a few clicks. Your second line of text should now look like this:



Field #5 – Create a Line

MarkMagic

Place your cursor on the approximate start location of the line. (Far left on your design screen just below your second text field.) Press **F6** then **L** for *Line*. MarkMagic asks you to move the cursor to the end of the line and press ENTER.



You may need to move your view so you can see the other side of your format. Press **SHIFT+F8 (F20)**, to move your view to the right. Hold your **Right Arrow** key down on your keyboard to bring your cursor to the right side of the format and press ENTER. You will be brought to the *Work With Line Field* screen.

Device: HPPCL5 Design a Format Format: LEARNXXX

Format	fields	Options	Print	Utilities
5.50	6.00	6.50	7.00	7.50
8.00	8.50	9.00	9.50	10.00

8.90
8.80
8.70
8.60
8.50
8.40
8.30
8.20
8.10
8.00
7.90
7.80
7.70
7.60
7.50

F12=Cancel F14=Rotate F15=Zoom in F16=Zoom out
F17=Top F18=Bottom 22=Rulers
Move the cursor to end of line field and press Enter. +

Work with Line Field

Device . . . : HPPCL5
Format . . . : LEARNXXX Length: 11.00" Width: 8.50" Rotation: 0

Field # . . . : 001

Type choices, press Enter.

Field name LINE1 Name
Description _____

Start Row / Column 7.50 .25 .01 - 11.00 / .01 - 8.50
End Row / Column 7.50 8.25 .01 - 11.00 / .01 - 8.50

Thickness 1 1 - 99

Style N F4 for list

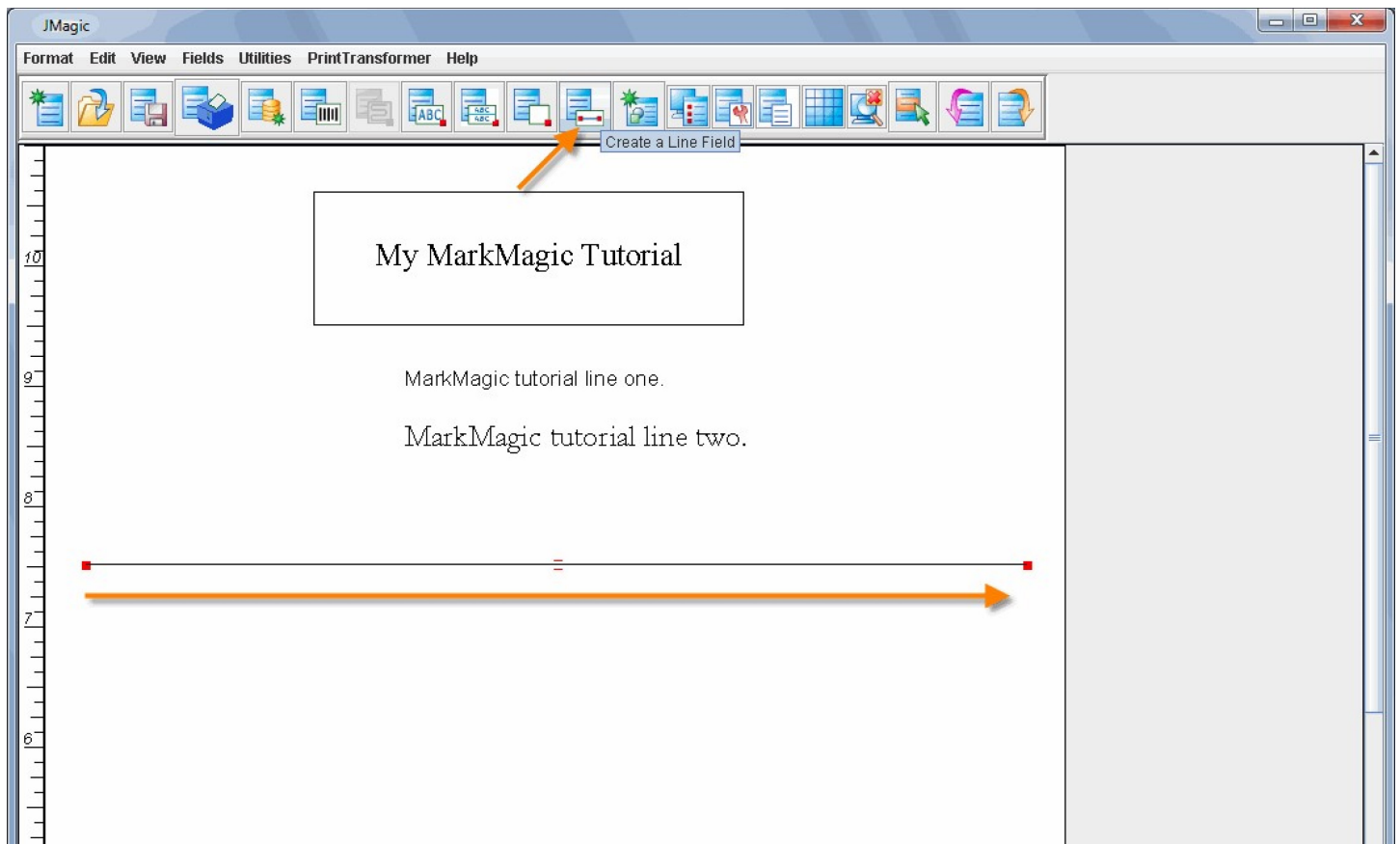
F3=Exit F5=Refresh F12=Cancel

For *Field Name* type **LINE1**. You can press ENTER twice and create a line with the values MarkMagic passed through, or enter in your own custom *Start Row/Column* and *End Row/Column* values if you wish. If you want to place the line in an exact location, change the values for *Start Row/Column* to 7.5 and .25 and change the values for *End Row/Column* to 7.5 and 8.25. Leave everything else at the default values and press ENTER twice to create your new line field.



JMagic

Creating a line field in JMAGIC is, again, very simple. At the top, click the *Create a Line Field* button. Move your + cursor to the approximate start position of the line. (Far left on your design screen just below your second text field.) Click and hold your mouse button and drag the line (you'll see it being created) to the opposite side of the format and let go of the mouse button. The line is created.



Field #6 – Copy the Line

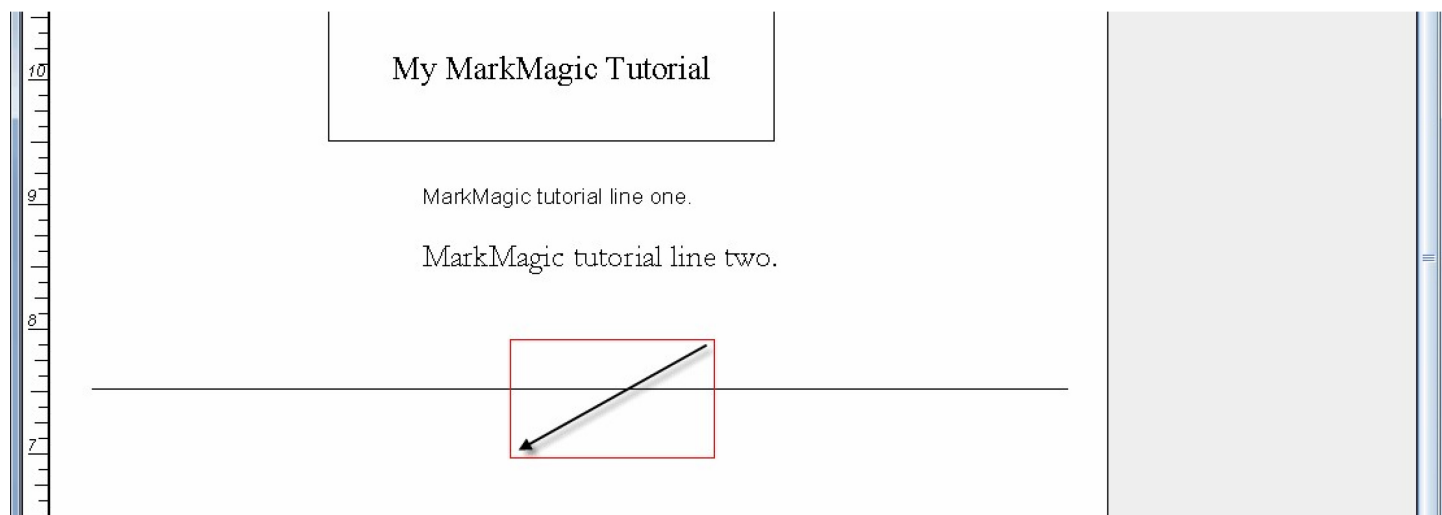
MarkMagic

Place your cursor within the light blue area of your previously created line field. Press the **F7** key on your keyboard. You could also use the Copy command in the menu above. (Press **TAB** to get to the top, the **D** for fields, then **C** for copy.) MarkMagic will ask you where you want the copied field to be. Move your cursor down a few lines and press ENTER. The *Copy a Field* window appears. This is where you specify the number of copies and the offset distance from the original. Set *Number of Copies* to **1**, *Vertical Offset* to **400-** (This value is in hundredths of an inch and is negative so this means down four inches.) and set the *Horizontal Offset* to **0**. Press ENTER to accept. You may have to *Page Down* a few times in order to see your newly copied line.

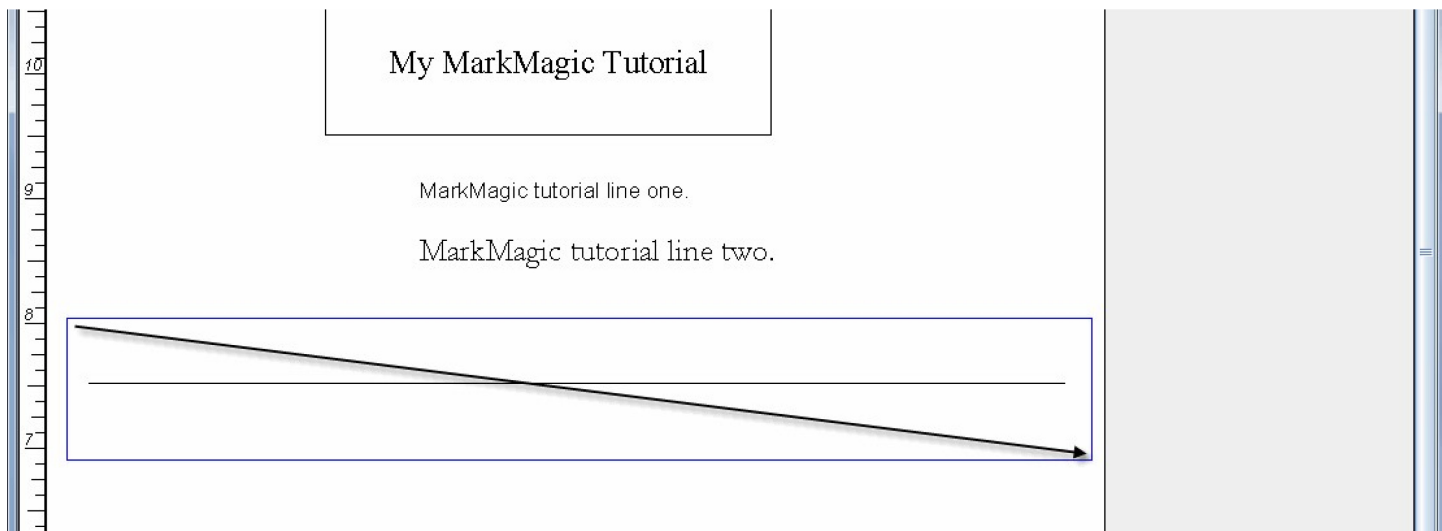


JMagic

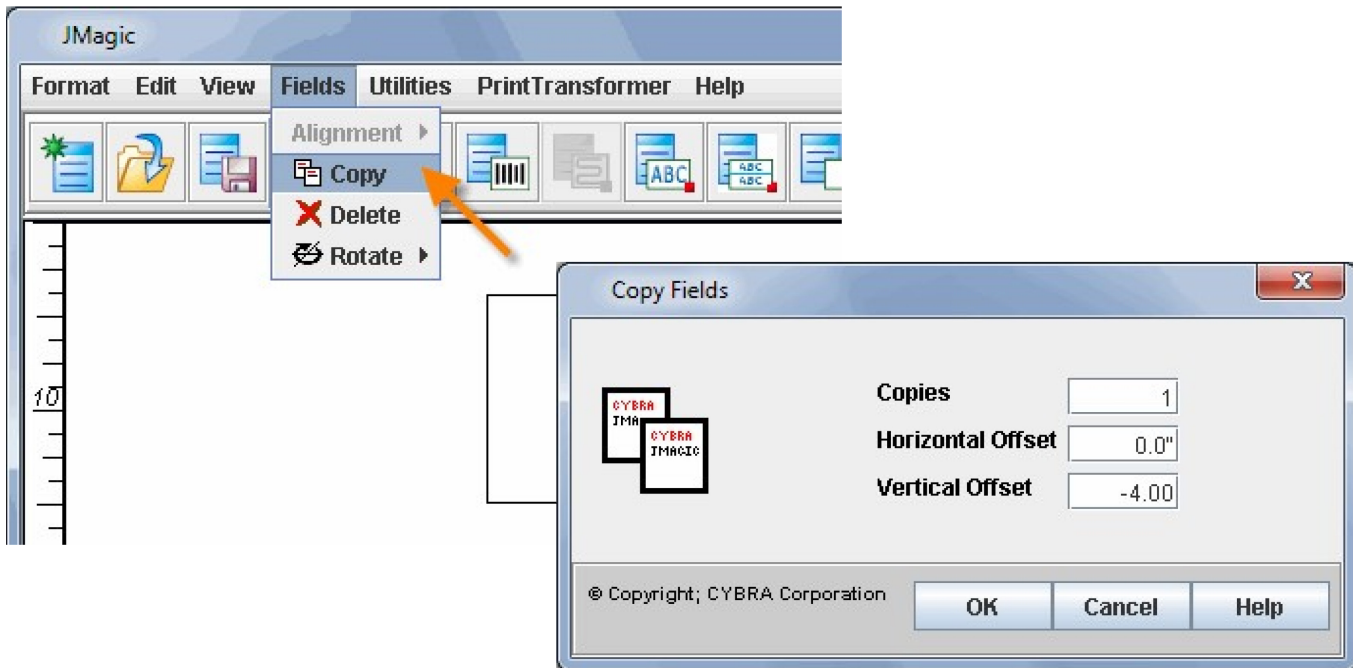
Click your previously created line field to select it. If the line is difficult to select, you can use the lasso feature to select the line. If you click an empty area of the canvas and then drag a selection box moving left, you will notice a **red** selection box being drawn. A red lasso means any field *touching* the lasso will be selected.



If you click an empty area of the canvas and then drag a selection box moving to the right, you will notice a **blue** selection box being drawn. A blue lasso means that, in order for a field to be selected, it must be entirely contained within the selection box.



With your new line field selected, at the very top of the JMagic window, click the *Fields* menu and then click *Copy*. Your cursor becomes a + again indicating it wants you to click somewhere. Click below your original line and the *Copy Fields* window appears. Set *Copies* to **1**, *Horizontal Offset* to **0** and *Vertical offset* to **-4.0** (Down four inches.) Press OK. You will see a duplicate line created four inches below your original line.

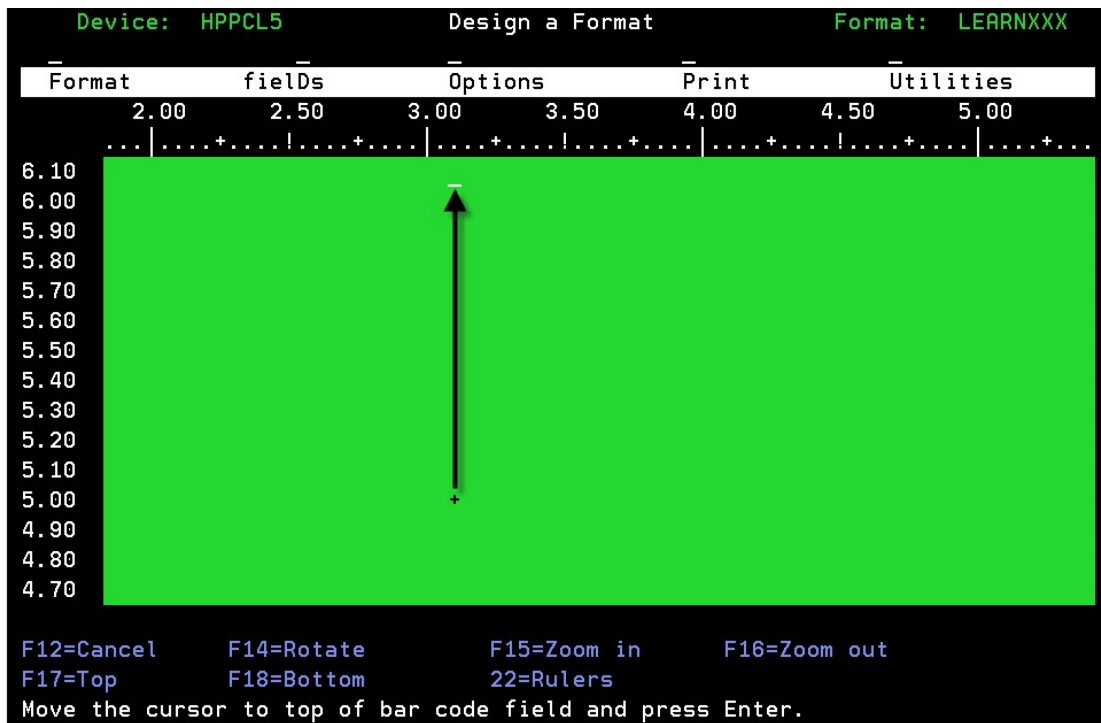


Field #7 – Create a Bar Code

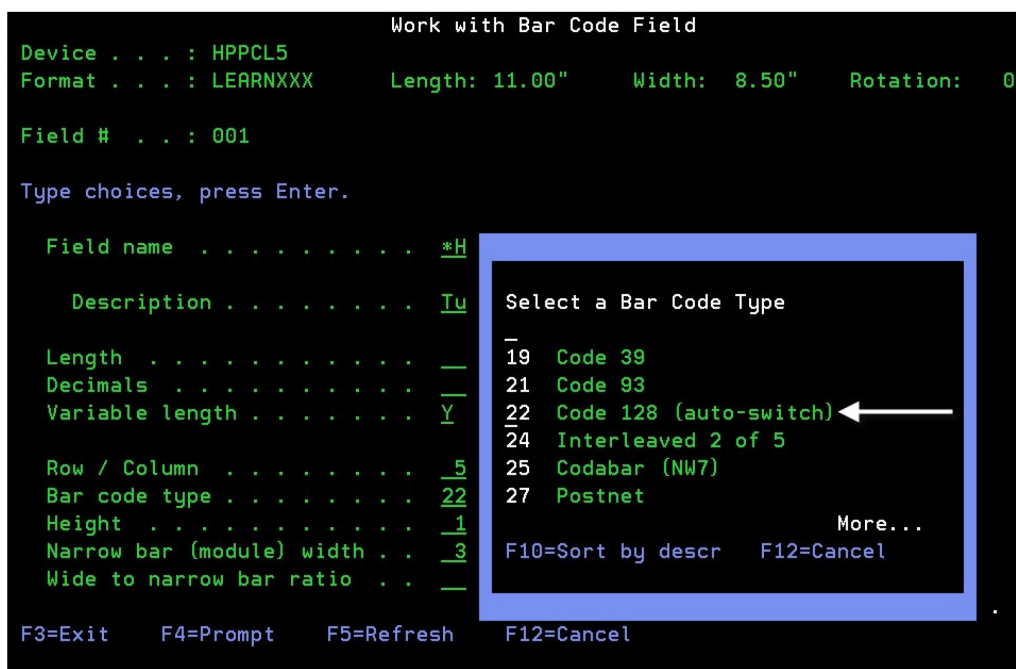
MarkMagic

Place your cursor approximately where the bottom left corner of the bar code would be and press **F6** on your keyboard. Press **B** for *Bar code*. The *Select Bar Code Style* window will appear. Type the letter “S” to create a standard one dimensional bar code style. Next, MarkMagic will ask you to move the cursor to where the top of the bar code would be. Move your cursor up about one and a half inches and press ENTER. The *Work With Bar Code Field* window appears.





Make this field a heading field by typing ***HEADING** in the *Field Name* field. Remember, this means that whatever is typed in the *Description* field will be printed (or encoded into the barcode). Type **Tutorial Barcode** in the *Description* field. Set the *Row/Column* to **5** and **3** respectively. (The *bottom left corner* of the barcode will be 5 inches up and 3 inches over.) Prompt **F4** the *Bar Code Type* field and choose #22 (Code 128 Autoswitch). Set the *Height* to **1.5** (if it isn't already) and set the *Narrow Bar (Module) Width* to **3**. Press ENTER twice to accept your settings. You should see your new barcode represented by a large blue rectangle.




```

Work with Bar Code Field

Device . . . : HPPCL5
Format . . . : LEARNXXX      Length: 11.00"   Width:  8.50"   Rotation:  0

Field # . . . : 001

Type choices, press Enter.

Field name . . . . . *HEADING      Name, *HEADING, *LINK,
                                   F4 for list of fields
Description . . . . . Tutorial Barcode

Length . . . . . 16              1 - 50
Decimals . . . . . —            0 - 9
Variable length . . . . . Y      Y=Yes, N=No

Row / Column . . . . . 5.00  3.00 .01 - 11.00 / .01 - 8.50
Bar code type . . . . . 22      F4 for list
Height . . . . . 1.50          .10 - 2.00
Narrow bar (module) width . . 3      1 - 30
Wide to narrow bar ratio . . —      2.0 - 4.0

More...

F3=Exit   F4=Prompt   F5=Refresh   F12=Cancel

```

```

Device: HPPCL5      Design a Format      Format: LEARNXXX

Format  fields  Options  Print  Utilities
 2.00   2.50   3.00   3.50   4.00   4.50   5.00
...|...+...!...+...|...+...!...+...|...+...!...+...|...+...

6.80
6.70
6.60
6.50
6.40
6.30
6.20
6.10
6.00
5.90
5.80
5.70
5.60
5.50
5.40

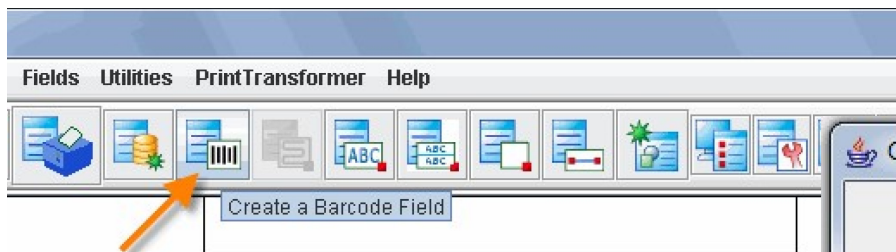
Tutorial Barcode

F2=Edit   F3=Exit   F4=Revert   F5=Undo   F6=Create
F7=Copy   F8=Delete  F11=Move  F12=Cancel  F24=More keys

```

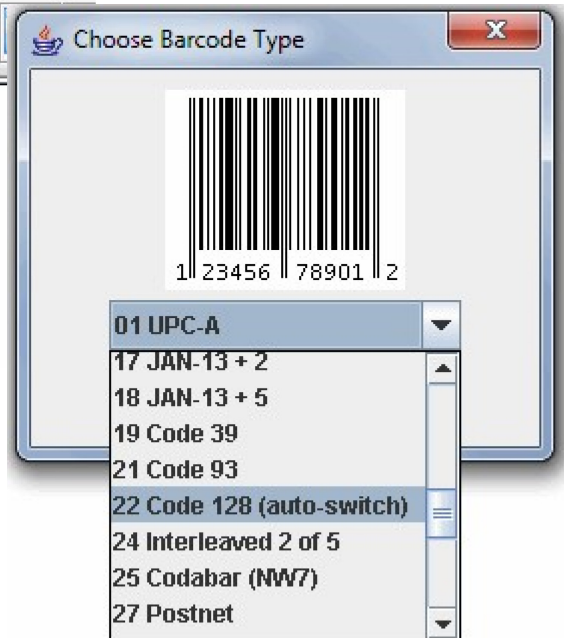
JMagic

At the top, click the *Create a Barcode Field* button. Click on the design canvas approximately where the *bottom left corner* of the barcode should be. The *Choose Barcode Type* window will appear, please select **22 Code 128 (auto-switch)** from the drop down menu and click **OK**. Next, the *Create a new Bar Code Field* window will be displayed.



MarkMagic tutorial line one.

MarkMagic tutorial line two.



If not already there, use the null down menu for *Field Name* and set it to **HEADING*. Type **Tutorial Barcode** in the *Description* field. *Row* and *Column* should be set to **5.0** and **3.0** respectively (overwrite the numbers that JMagic pulled in for you from where you clicked). In the pull down menu for *Bar code type* you should see **22 Code128 Autoswitch**.

Edit A Bar Code Field

Device
 Name: HPPCL5
 Description: .5 & Compatible

Format
 Name: LEARNXXX
 Length: 11.0" Width: 8.5"
 Description: Description of your format
 Rotation: A 0°

Properties | **Display** | **Settings**

Name and Description
 Field Name: *HEADING [Browse...] Field #: 1
 Description: Tutorial Barcode

Positioning Properties
 Row: 5.0" Column: 3.0"

Attributes
 Length: 16
 Decimals:
 Variable Length: ☒ Yes ☐ No

Bar Code Type
 Bar code Type: 22 Code 128 (auto-switch)

© Copyright; CYBRA Corporation; 2009; All Rights Reserved

OK Cancel Help

At the top of this window, press the *Display* tab and change the *Height* to **1.5** and the *Narrow Bar Width* to **3**. Press OK and you should see your new bar code on in your design screen.

Create A New Bar Code Field

Device

Name: HPPCL5
Description: .5 & Compatible

Format

Name: LEARNXXX
Length: 11.0" Width: 8.5"
Description: Description of your format
Rotation: A 0°

Properties **Display** **Settings**

Appearance

Human Readable: 00 No human readable characters
Alignment: L Left

Rotation

Rotation: A 0° 90° 180° 270°

Attributes

Height: 1.5"
Narrow Bar Width: 3
Wide to Narrow BarRatio: 3.0
Number of Columns: 10
Number of Mils: 14.8

Spooled Data Position

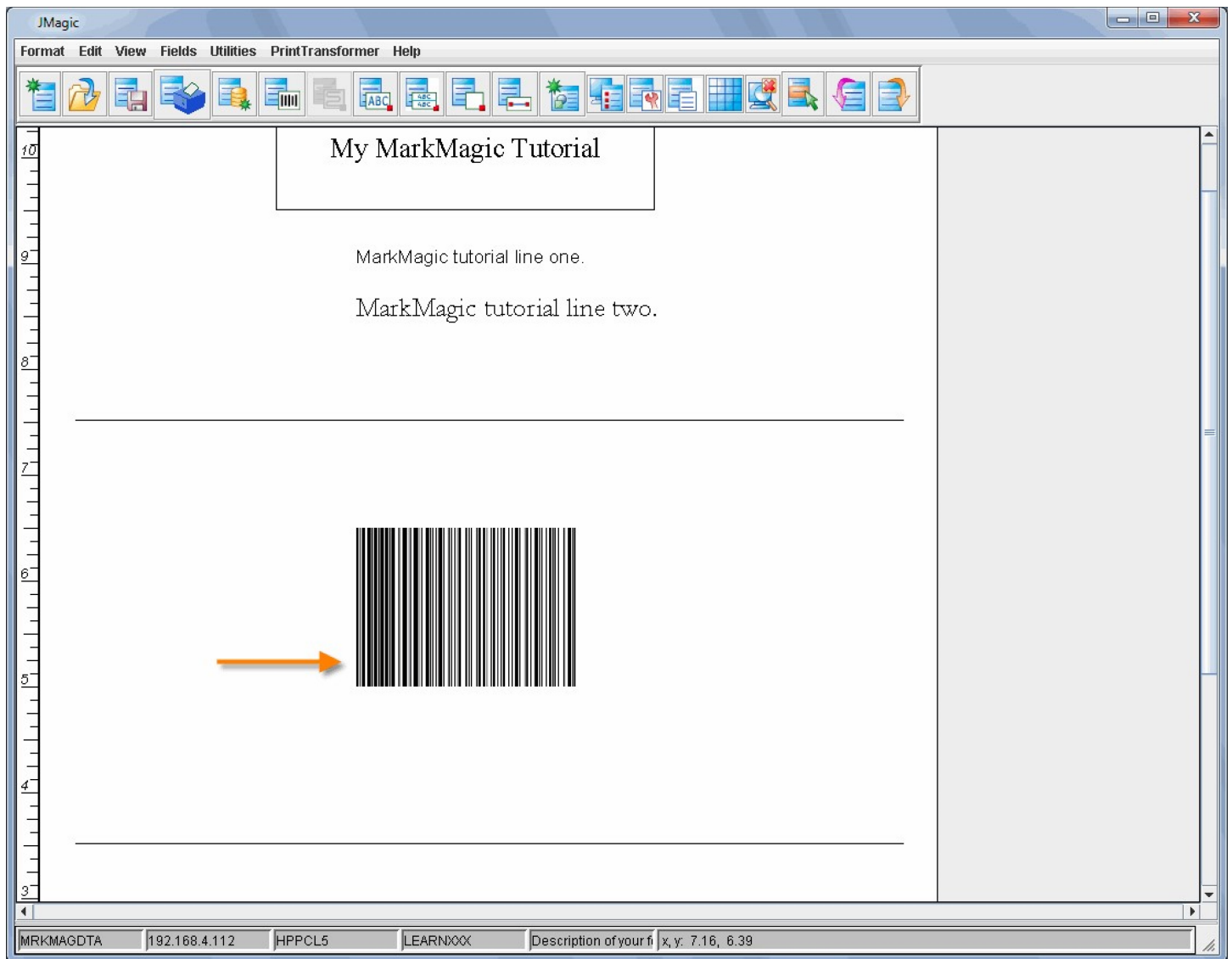
Spool Line: 0 Spool Column: 0

Fields Linking to this Field

0 Field(s)

© Copyright; CYBRA Corporation; 2009; All Rights Reserved

OK Cancel Help



Field #8 – Text: “Made By: *Your Name*”

MarkMagic

Place your cursor in the general location where the “M” in “Made” should be and press **F6** on your keyboard. Press **T** for *Text field*. The *Work With Text Field* screen is now shown. Type **Made by: *your name*** in the *Description* field. (Replacing “your name” with your first name.) Change the *Row/Column* to **2** and **4.5** respectively. Since we want this text to stand out, let’s change the *Points* to **20**. Also, Page Down once and change the *Style* to **B** for **Bold**. Press ENTER twice to accept your text field.

Work with Text Field

Device . . . : HPPCL5
Format . . . : LEARNXXX Length: 11.00" Width: 8.50" Rotation: 0

Field # . . . : 004
Name : *HEADING Description: Made by: Your Name

Type choices, press Enter.

Edit code _
Check digit 0
Increment type I
Increment value _

Rotate Field 0 0, 90, 180, 270

Style B
Color B

Character gap (dots) 0

F3=Exit F4=Prompt F5=Refresh F12=Cancel More...

Device: HPPCL5 Design a Format Format: LEARNXXX

Format	fields	Options	Print	Utilities
4.00	4.50	5.00	5.50	6.00
6.50	7.00			

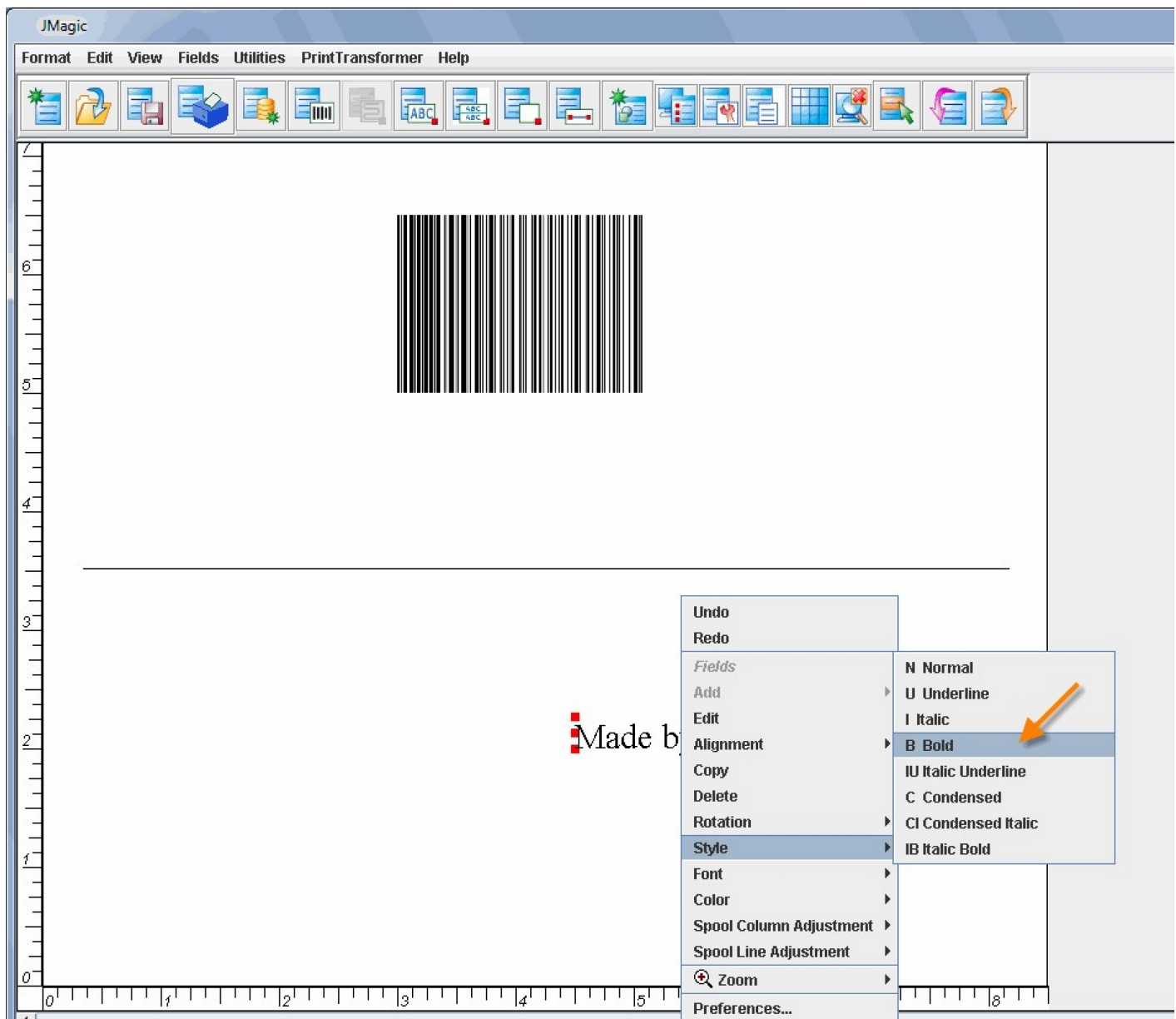
2.90
2.80
2.70
2.60
2.50
2.40
2.30
2.20
2.10
2.00
1.90
1.80
1.70
1.60
1.50

Made by: Your Name

F2=Edit F3=Exit F4=Revert F5=Undo F6=Create
F7=Copy F8=Delete F11=Move F12=Cancel F24=More keys

JMagic

Click on the *Create a Text Field* button at the top of the window. Click in the design area in the general location of where the “M” in “Made” should be. The *Create a New Text Field* window appears. Type **Made by: your name** in the *Description* field. (Replacing “your name” with your first name.) Change the *Row* to **2** and the *Column* to **4.5**. Since we want this text to stand out, let’s change the *Points* to **20**. The rest of the fields can be left with the default values. Press OK. Now, right-click on the new text field, choose *Style* and then choose **Bold** from the menu. You will see the field change to bold on the canvas.



Be sure to save your format as it is now time to print your work. (Format -> Save from the main menu.)

Printing Your Format

Now that we have completed the format, it's time to print it. We are assuming you already have an HPPCL compatible laser printer configured on your System i.

MarkMagic

You should still be in the design view of your format, so press the **TAB** key. This will move your cursor to the top of the screen. Press **P** for *Print* and then **F** for *Format Layout*. Also, a quicker way to access the "Print Layout" is using the **F21** key (SHIFT+F9). You are now in the PRTLBLF (Print a Label File) command. By invoking this command while in the design view of your format, the name of your format is already entered along with *LAYOUT. The only option that you would need to change here is your destination printer

information. If your laser printer is setup as an AS/400 device, you can type the name of the device in the *Printer Device* field:

```
Print a Label File (PRTLBLF)

Type choices, press Enter.

Label file . . . . . > *LAYOUT      Name, *NONE, *DTAQ...
Library . . . . . > *LIBL          Name, *LIBL
Format name . . . . . > LEARNXXX    Name, *FILE, F4 for list
Printer device . . . . . > PRTDEVNAME Name, *JOB, F4 for list
Form type . . . . . > *STD          Character value, *STD
Spooled printer output . . . . . > *YES      *YES, *NO
Spooled file name . . . . . > *FMT        Character value, *PRTF, *FMT
Quantity . . . . . > *DEFAULT        1-9999, *DEFAULT

Additional Parameters

Translate unprintable chars . . > *YES      *YES, *NO
Send format . . . . . > *YES      *YES, *NO, *HDG
Send graphics image . . . . . > *YES      *YES, *NO
Clear graphics buffer . . . . . > *YES      *YES, *NO
Print speed (inches/second) . . > *HIGH     Number, *LOW, *MEDIUM, *HIGH
More...

F3=Exit  F4=Prompt  F5=Refresh  F12=Cancel  F13=How to use this display
F24=More keys
```

If your printer is setup as a remote output queue without an AS400 device description, then you will have to press **F10** to view additional options (if they are not visible already) then **Page Down** to *Spooled Output Queue* and type the name and library of your remote output queue. Once this information is entered, press ENTER to print your format.

```
Print a Label File (PRTLBLF)

Type choices, press Enter.

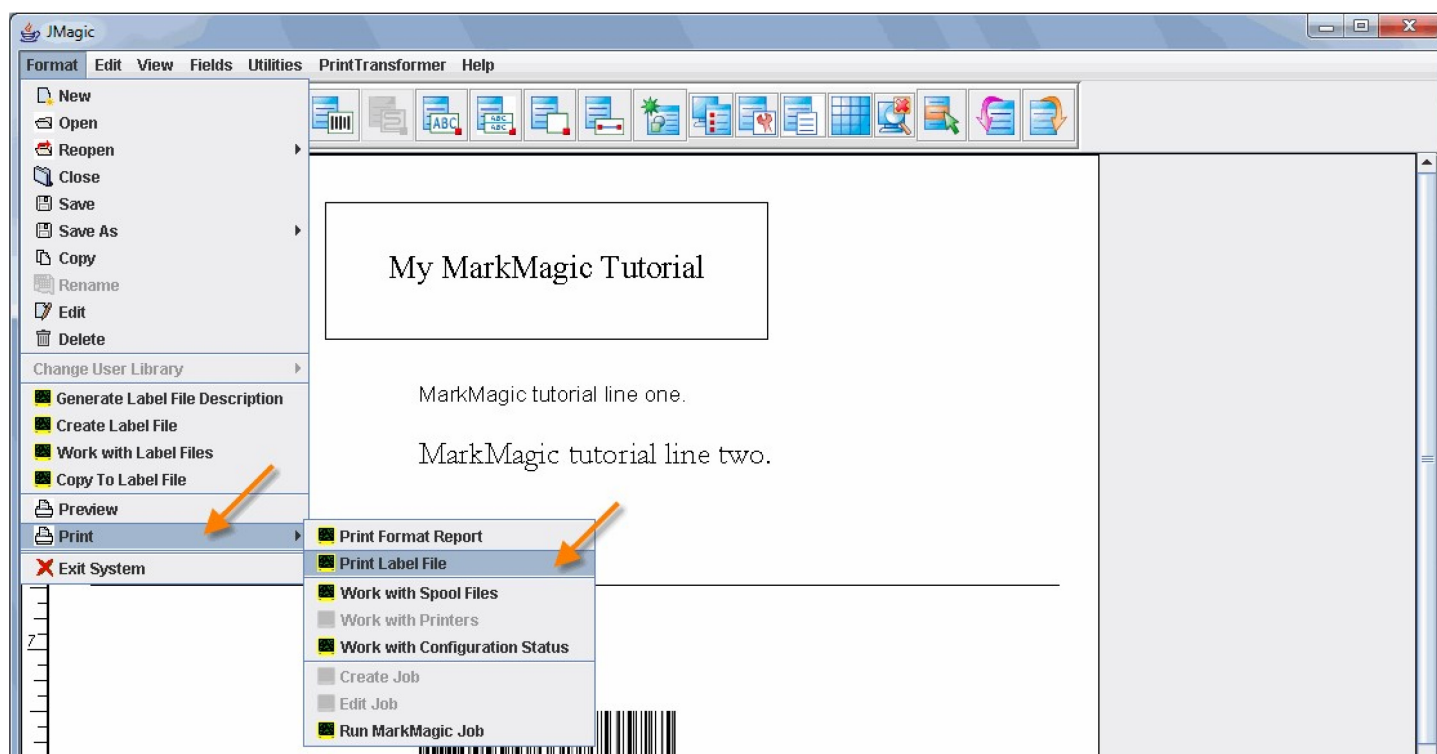
Forms alignment . . . . . > *LEFT
Ribbon . . . . . > *YES
Heat setting . . . . . > *MEDIUM
Print sensitivity . . . . .
RF Network . . . . . > *NONE
Spool copies . . . . . > 001
Hold spooled file . . . . . > *NO
Save spooled file . . . . . > *NO
Spooled output queue . . . . . > OUTQNAME
Library . . . . . > OUTQLIB
Source drawer . . . . . > 1
Output bin . . . . . > 001
Duplex . . . . . > *NO
Enable ASCII transparency . . . . . > *NO
User library name . . . . . > *NONE
Character Set . . . . . > *DEFAULT

*LEFT, *CENTER, *BACK...
*YES, *NO, *DEFAULT
Number, *LOW, *MEDIUM, *HIGH
Character value
Name, *NONE, F4 for list
1-255
*YES, *NO
*YES, *NO
Name, *DEV, *JOB
Name, *LIBL, *USRLIB
1-255, *E1, *E2, *E3, *E4
1-255
*YES, *NO, *TUMBLE
*YES, *NO, *DIR
Name, *NONE, *SEARCH, F4 list
*DEFAULT, *ENG, *ENU, *ESP...
More...

F3=Exit F4=Prompt F5=Refresh F12=Cancel F13=How to use this display
F24=More keys
```

JMagic

To print from JMagic, first save it by clicking *Format* and then *Save*. After the format has been saved, click *Format* then *Print*, and then click “*Print Label File*.” The next window is an exact duplicate of the green screen MarkMagic *Print Label File* command. If you have previously printed successfully using “green screen” MarkMagic, you should be able to print by pressing OK now. (JMagic retrieves all of the previous command parameters that were last used in the green screen to fill in its print command.)



If you have not printed from MarkMagic, there are a few options that need to be set. ***LAYOUT** should be picked as the *Label File* parameter. Your format name, **LEARNXXX**, will need to be entered in the *Format Name* field. You will need to type in your System i printer device name in the *Printer Device* field. Lastly, make sure **HPPCL5** is set as the *Printer Type*.

The screenshot shows the 'Print a Label File (PRTLBLF)' dialog box with the following settings:

Field	Value	Type
Label file:	*LAYOUT	Name
Library:	*LIBL	Name
Label file member:	*FIRST	Name
Format name:	LEARNXXX	Name
Printer device:	PRTDEVNAME	Name
Form type:	*STD	Character value
Spoiled printer output:	<input checked="" type="radio"/> *YES <input type="radio"/> *NO	
Spoiled file name:	*FMT	Character value
Quantity:	*DEFAULT	1-9999
Printer type:	HPPCL5	Name, F4 for printer list
Advanced Parameters		
User library name:	MRKMAGDTA	Name

At the bottom of the dialog, there is an 'Advanced' button on the left and 'OK', 'Cancel', 'Help', and a question mark icon on the right.

If your printer is setup as a remote output queue, you will have to press the “*Advanced*” button on the bottom left and scroll down until you see *Spoiled output queue* and you’re your queue information there. Once all of this is set, press OK to print your format

Print a Label File (PRTLBLF)

File Edit View Help

Forms alignment: *LEFT

Ribbon: ☒ *YES ☐ *NO ☐ *DEFAULT

Heat setting: *MEDIUM Number

Print sensitivity: Character value

Format number: *NONE Number

RF Network: *NONE Name

Spool copies: 1 1-255

Hold spooled file: ☐ *YES ☒ *NO

Save spooled file: ☐ *YES ☒ *NO

Spooled output queue: OUTQNAME Name

Library: OUTQLIB Name

Source drawer: 1 1-255

Output bin: 1 1-255

Duplex: ☐ *YES ☒ *NO ☐ *TUMBLE

Enable ASCII transparency: ☐ *YES ☒ *NO ☐ *DIR

User library name: MRKMAGDTA Name

Character Set: *DEFAULT

Data: Character value

Rule set name: *NONE Name

Rule set library name: *NONE Name

Secure from other overrides: ☐ *YES ☒ *NO

Emulated device: *NONE Name

Print to file: *NONE Path name

Recipient:

Basic OK Cancel Help ?

Congratulations

Congratulations on completing the MarkMagic and JMagic Basic Concepts tutorial! Let's review some of the things we covered:

Topics covered:

1. How to start MarkMagic and JMagic.
2. What a format is and how to create a new format.
3. What a *HEADING field is.
4. How to add new text fields, boxes, lines and barcodes.
5. How to copy and edit a field using the right click and quick edit methods.
6. How to print a format.

You can now continue on with the MarkMagic Intermediate Concepts Tutorials. They you will show you how to define variable fields with data originating from a database (Labels Concepts) or a held spoolfile (Forms Concepts).